

For Research Use Only

ITGB1BP1 Polyclonal antibody

Catalog Number: 12300-1-AP



Basic Information

Catalog Number: 12300-1-AP	GenBank Accession Number: BC012264	Purification Method: Antigen affinity purification
Size: 700 µg/ml	GeneID (NCBI): 9270	Recommended Dilutions: WB 1:200-1:1000
Source: Rabbit	UNIPROT ID: O14713	IP 0.5-4.0 µg for 1.0-3.0 mg of total protein lysate
Isotype: IgG	Full Name: integrin beta 1 binding protein 1	IHC 1:20-1:200
Immunogen Catalog Number: AG2945	Calculated MW: 200 aa, 22 kDa	IF 1:10-1:100
	Observed MW: 22 kDa	

Applications

Tested Applications:
IF/ICC, IHC, IP, WB, ELISA

Species Specificity:
human, mouse, rat

Note-IHC: suggested antigen retrieval with TE buffer pH 9.0; (*) Alternatively, antigen retrieval may be performed with citrate buffer pH 6.0

Positive Controls:

WB: PC-3 cells, mouse thymus tissue, human brain tissue

IP: mouse thymus tissue,

IHC: human heart tissue, human colon tissue

IF: PC-3 cells,

Background Information

ITGB1BP1, also named as ICAP1, is a key regulator of the integrin-mediated cell-matrix interaction signaling by binding to the ITGB1 cytoplasmic tail. It plays a role in cell proliferation, differentiation, spreading, adhesion and migration in the context of mineralization and bone development and angiogenesis. ITGB1BP1 promotes transcriptional activity of the MYC promoter.

Storage

Storage:
Store at -20°C. Stable for one year after shipment.

Storage Buffer:
PBS with 0.02% sodium azide and 50% glycerol pH 7.3.

Aliquoting is unnecessary for -20°C storage

For technical support and original validation data for this product please contact:

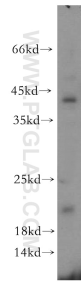
T: 4006900926

E: Proteintech-CN@ptglab.com

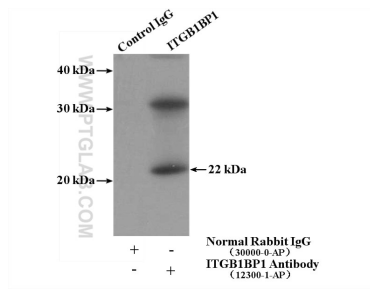
W: ptgcn.com

This product is exclusively available under Proteintech Group brand and is not available to purchase from any other manufacturer.

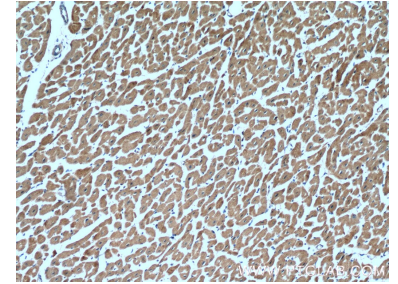
Selected Validation Data



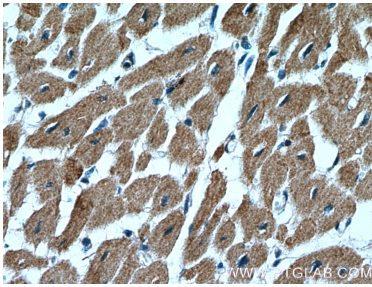
PC-3 cells were subjected to SDS PAGE followed by western blot with 12300-1-AP (ITGB1BP1 antibody) at dilution of 1:300 incubated at room temperature for 1.5 hours.



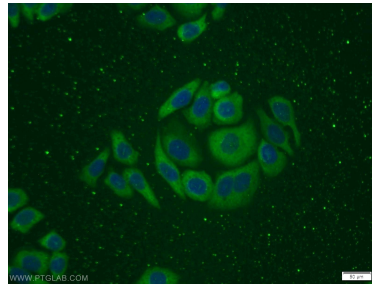
IP result of anti-ITGB1BP1 (IP:12300-1-AP, 4ug; Detection:12300-1-AP 1:300) with mouse thymus tissue lysate 2800ug.



Immunohistochemical analysis of paraffin-embedded human heart tissue slide using 12300-1-AP (ITGB1BP1 Antibody) at dilution of 1:200 (under 10x lens).



Immunohistochemical analysis of paraffin-embedded human heart tissue slide using 12300-1-AP (ITGB1BP1 Antibody) at dilution of 1:200 (under 40x lens).



Immunofluorescent analysis of PC-3 cells using 12300-1-AP (ITGB1BP1 antibody) at dilution of 1:25 and Alexa Fluor 488-conjugated AffiniPure Goat Anti-Rabbit IgG(H+L).