

For Research Use Only

# SFXN1 Polyclonal antibody, PBS Only

Catalog Number: 12296-1-PBS

Featured Product



## Basic Information

Catalog Number:

12296-1-PBS

Concentration:

1 mg/ml

Source:

Rabbit

Isotype:

IgG

Immunogen Catalog Number:

AG2985

GenBank Accession Number:

BC020517

GeneID (NCBI):

94081

UNIPROT ID:

Q9H9B4

Full Name:

sideroflexin 1

Calculated MW:

35.6 kDa

Observed MW:

30-35 kDa

Purification Method:

Antigen affinity purification

## Applications

Tested Applications:

WB, IHC, IP, Indirect ELISA

Species Specificity:

human, mouse, rat

## Background Information

SFXN1, the founding member of the SLC56 family, was identified by positional cloning of the mutation in the flexed-tail mouse model with sideroblastic anemia. SFXN1 was recently identified as a mitochondrial serine transporter essential for one-carbon (1C) metabolism, a process in which folate species are generated and used in biosynthetic pathways required for cell proliferation. In HEK293 cells, SFXN1 is the most abundant isoform among the SFXNs.

## Storage

Storage:

Store at -80°C.

**The product is shipped with ice packs. Upon receipt, store it immediately at -80°C**

Storage Buffer:

PBS only, pH7.3

For technical support and original validation data for this product please contact:

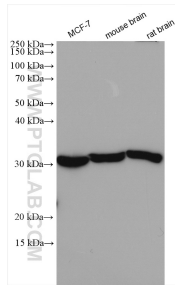
T: 4006900926

E: [Proteintech-CN@ptglab.com](mailto:Proteintech-CN@ptglab.com)

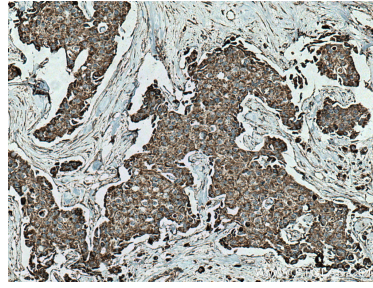
W: [ptgcn.com](http://ptgcn.com)

**This product is exclusively available under Proteintech Group brand and is not available to purchase from any other manufacturer.**

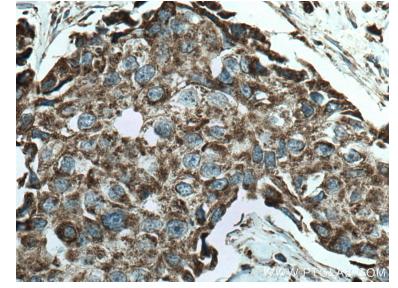
## Selected Validation Data



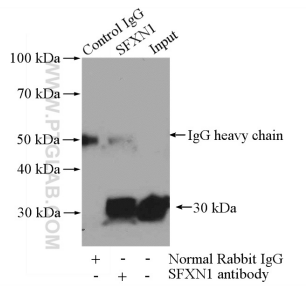
Various lysates were subjected to SDS PAGE followed by western blot with 12296-1-AP (SFYN1 antibody) at dilution of 1:3000 incubated at room temperature for 1.5 hours. This data was developed using the same antibody clone with 12296-1-PBS in a different storage buffer formulation.



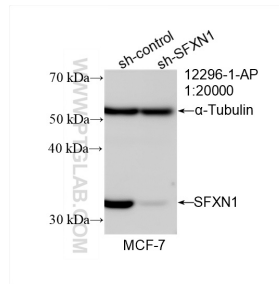
Immunohistochemical analysis of paraffin-embedded human breast cancer tissue slide using 12296-1-AP (SFYN1 antibody) at dilution of 1:200 (under 10x lens). Heat mediated antigen retrieval with Tris-EDTA buffer (pH 9.0). This data was developed using the same antibody clone with 12296-1-PBS in a different storage buffer formulation.



Immunohistochemical analysis of paraffin-embedded human breast cancer tissue slide using 12296-1-AP (SFYN1 antibody) at dilution of 1:200 (under 40x lens). Heat mediated antigen retrieval with Tris-EDTA buffer (pH 9.0). This data was developed using the same antibody clone with 12296-1-PBS in a different storage buffer formulation.



IP result of anti-SFYN1 (IP:12296-1-AP, 4ug; Detection:12296-1-AP 1:800) with mouse brain tissue lysate 4000ug. This data was developed using the same antibody clone with 12296-1-PBS in a different storage buffer formulation.



WB result of SFYN1 antibody (12296-1-AP; 1:20000; incubated at room temperature for 1.5 hours) with sh-Control and sh-SFYN1 transfected MCF-7 cells. This data was developed using the same antibody clone with 12296-1-PBS in a different storage buffer formulation.