

For Research Use Only

# PLXDC2 Polyclonal antibody, PBS Only

Catalog Number:12285-1-PBS



## Basic Information

Catalog Number:

12285-1-PBS

Concentration:

1 mg/ml

Source:

Rabbit

Isotype:

IgG

Immunogen Catalog Number:

AG2940

GenBank Accession Number:

BC012885

GeneID (NCBI):

84898

UNIPROT ID:

Q6UX71

Full Name:

plexin domain containing 2

Calculated MW:

480 aa, 54 kDa

Observed MW:

60 kDa

Purification Method:

Antigen affinity purification

## Applications

Tested Applications:

WB, IHC, Indirect ELISA

Species Specificity:

human, mouse, rat

## Background Information

PLXDC2 (Plexin-domain containing 2), also named tumor endothelial marker 7-related protein (TEM7R), is a single-pass type I membrane protein with some homology to nidogen and to plexins. PLXDC2 is located in tumor endothelium and plays a role in tumor angiogenesis. Three isoforms of PLXDC2 produced by alternative splicing have been described. Recent finding revealed that PLXDC2 is a mitogen for neural progenitors and functions as a novel regulator of the development of different brain regions, suggesting its role in coordinating proliferation and differentiation in the developing nervous system.

## Storage

Storage:

Store at -80°C.

**The product is shipped with ice packs. Upon receipt, store it immediately at -80°C**

Storage Buffer:

PBS Only

For technical support and original validation data for this product please contact:

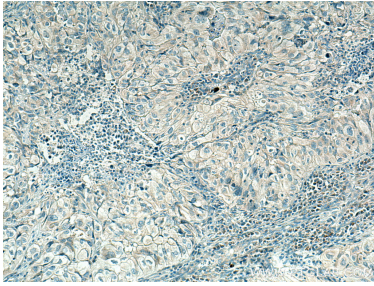
T: 4006900926

E: [Proteintech-CN@ptglab.com](mailto:Proteintech-CN@ptglab.com)

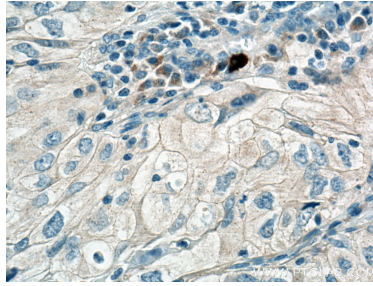
W: [ptgcn.com](http://ptgcn.com)

**This product is exclusively available under Proteintech Group brand and is not available to purchase from any other manufacturer.**

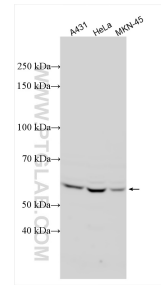
## Selected Validation Data



Immunohistochemical analysis of paraffin-embedded human lung cancer tissue slide using 12285-1-AP (PLXDC2 antibody) at dilution of 1:200 (under 10x lens). Heat mediated antigen retrieval with Tris-EDTA buffer (pH 9.0). This data was developed using the same antibody clone with 12285-1-PBS in a different storage buffer formulation.



Immunohistochemical analysis of paraffin-embedded human lung cancer tissue slide using 12285-1-AP (PLXDC2 antibody) at dilution of 1:200 (under 40x lens). Heat mediated antigen retrieval with Tris-EDTA buffer (pH 9.0). This data was developed using the same antibody clone with 12285-1-PBS in a different storage buffer formulation.



Various lysates were subjected to SDS PAGE followed by western blot with 12285-1-AP (PLXDC2 antibody) at dilution of 1:1000 incubated at room temperature for 1.5 hours. This data was developed using the same antibody clone with 12285-1-PBS in a different storage buffer formulation.