

For Research Use Only

PLAC8 Polyclonal antibody, PBS Only

Catalog Number: 12284-1-PBS

Featured Product



Basic Information

Catalog Number:

12284-1-PBS

Size:

1 mg/ml

Source:

Rabbit

Isotype:

IgG

Immunogen Catalog Number:

AG2939

GenBank Accession Number:

BC012205

GeneID (NCBI):

51316

UNIPROT ID:

Q9NZF1

Full Name:

placenta-specific 8

Calculated MW:

12 kDa

Observed MW:

12 kDa

Purification Method:

Antigen affinity purification

Applications

Tested Applications:

WB, IHC, Indirect ELISA

Species Specificity:

human

Background Information

PLAC8, also named as Protein C15, is a placenta-specific protein. The expression was downregulated upon activation, particularly in dendritic cells generated in vitro from CD34 (142230) progenitor cells. The MW of PLAC8 is about 12-20kd.

Storage

Storage:

Store at -80°C.

The product is shipped with ice packs. Upon receipt, store it immediately at -80°C

Storage Buffer:

PBS Only

For technical support and original validation data for this product please contact:

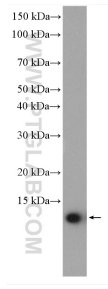
T: 4006900926

E: Proteintech-CN@ptglab.com

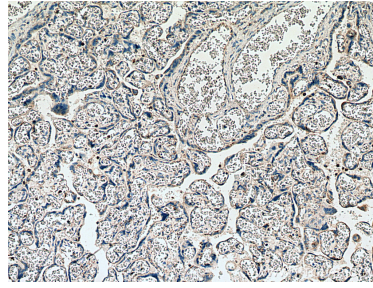
W: ptgcn.com

This product is exclusively available under Proteintech Group brand and is not available to purchase from any other manufacturer.

Selected Validation Data



human peripheral blood leukocyte were subjected to SDS PAGE followed by western blot with 12284-1-AP (PLAC8 antibody) at dilution of 1:300 incubated at room temperature for 1.5 hours. This data was developed using the same antibody clone with 12284-1-PBS in a different storage buffer formulation.



Immunohistochemical analysis of paraffin-embedded human placenta tissue slide using 12284-1-AP (PLAC8 antibody) at dilution of 1:200 (under 10x lens). Heat mediated antigen retrieval with Tris-EDTA buffer (pH 9.0). This data was developed using the same antibody clone with 12284-1-PBS in a different storage buffer formulation.