

For Research Use Only

SSSCA1 Polyclonal antibody

Catalog Number: 12273-1-AP

Featured Product

1 Publications



Basic Information

Catalog Number:

12273-1-AP

Size:

500 µg/ml

Source:

Rabbit

Isotype:

IgG

Immunogen Catalog Number:

AG2916

GenBank Accession Number:

BC014791

GeneID (NCBI):

10534

UNIPROT ID:

O60232

Full Name:

Sjogren syndrome/scleroderma autoantigen 1

Calculated MW:

199 aa, 21 kDa

Observed MW:

27 kDa

Purification Method:

Antigen affinity purification

Recommended Dilutions:

WB 1:500-1:1000

IP 0.5-4.0 µg for 1.0-3.0 mg of total protein lysate

IHC 1:50-1:500

IF 1:10-1:100

Applications

Tested Applications:

FC, IF, IHC, IP, WB, ELISA

Cited Applications:

WB

Species Specificity:

human, mouse, rat

Cited Species:

human

Note-IHC: suggested antigen retrieval with TE buffer pH 9.0; (*) Alternatively, antigen retrieval may be performed with citrate buffer pH 6.0

Positive Controls:

WB : HeLa cells, A549 cells, NIH/3T3 cells

IP : HeLa cells,

IHC : mouse testis tissue,

IF : HeLa cells,

Background Information

SSSCA1, also named as Autoantigen p27, is centromere-associated protein. It may induce anti-centromere antibodies. SSSCA1 plays a role in mitosis. It's involved in Sjogren syndrome/scleroderma. The calculated MW of SSSCA1 is 21.5 kDa (native form), with modification the MW is about 23- 27 kDa.

Notable Publications

| Author | Pubmed ID | Journal | Application |
|---------------|-----------|---------|-------------|
| Yuichi Yagita | 37480851 | Cell | WB |

Storage

Storage:

Store at -20°C. Stable for one year after shipment.

Storage Buffer:

PBS with 0.02% sodium azide and 50% glycerol pH 7.3.

Aliquoting is unnecessary for -20°C storage

For technical support and original validation data for this product please contact:

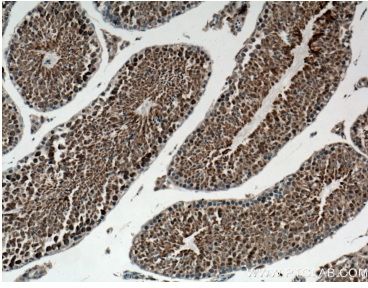
T: 4006900926

E: Proteintech-CN@ptglab.com

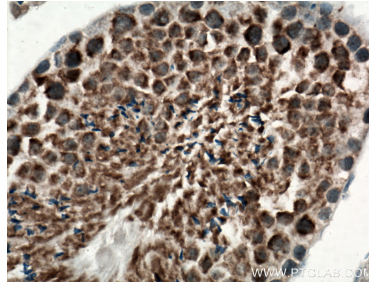
W: ptgcn.com

This product is exclusively available under Proteintech Group brand and is not available to purchase from any other manufacturer.

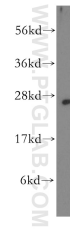
Selected Validation Data



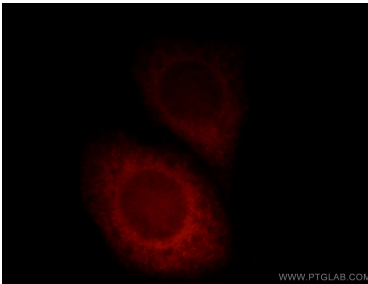
Immunohistochemical analysis of paraffin-embedded mouse testis tissue slide using 12273-1-AP (SSSCA1 antibody) at dilution of 1:100 (under 10x lens). Heat mediated antigen retrieval with Tris-EDTA buffer (pH 9.0).



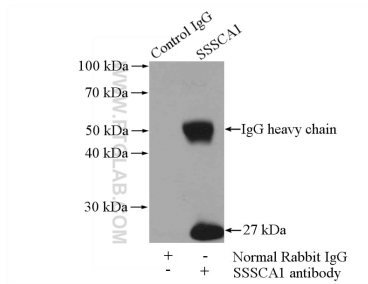
Immunohistochemical analysis of paraffin-embedded mouse testis tissue slide using 12273-1-AP (SSSCA1 antibody) at dilution of 1:100 (under 40x lens). Heat mediated antigen retrieval with Tris-EDTA buffer (pH 9.0).



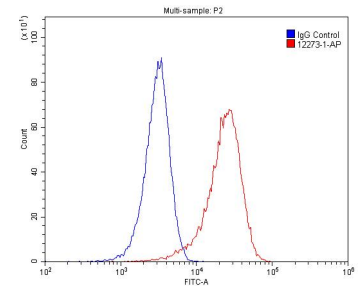
HeLa cells were subjected to SDS PAGE followed by western blot with 12273-1-AP (SSSCA1 antibody) at dilution of 1:500 incubated at room temperature for 1.5 hours.



Immunofluorescent analysis of HeLa cells, using SSSCA1 antibody 12273-1-AP at 1:25 dilution and Rhodamine-labeled goat anti-rabbit IgG (red).



IP result of anti-SSSCA1 (IP:12273-1-AP, 4ug; Detection:12273-1-AP 1:1000) with HeLa cells lysate 2000ug.



1×10^6 HeLa cells were stained with 0.2 ug SSSCA1 antibody (12273-1-AP) and CoraLite488-Conjugated AffiniPure Goat Anti-Rabbit IgG(H+L) at dilution 1:1500 (red), or stained with 0.2 ug isotype control and CoraLite488-Conjugated AffiniPure Goat Anti-Rabbit IgG(H+L) at dilution 1:1500 (blue). Cells were fixed with 4% PFA and permeabilized with 0.1% Triton X-100.