

For Research Use Only

REG4 Polyclonal antibody, PBS Only

Catalog Number: 12268-1-PBS



Basic Information

Catalog Number:

12268-1-PBS

Source:

Rabbit

Isotype:

IgG

Immunogen Catalog Number:

AG2934

GenBank Accession Number:

BC017089

GeneID (NCBI):

83998

UNIPROT ID:

Q9BYZ8

Full Name:

regenerating islet-derived family,
member 4

Calculated MW:

158 aa, 18 kDa

Observed MW:

18 kDa

Purification Method:

Antigen affinity purification

Applications

Tested Applications:

WB, IHC, ELISA

Species Specificity:

human, mouse

Background Information

REG4 (Regenerating islet-derived protein 4) is a secreted C-type lectin that belongs to the regenerating gene (REG) family. Initially identified in a cDNA library from ulcerative colitis tissue, REG4 is predominantly expressed by intestinal enteroendocrine cells and is markedly up-regulated during gut inflammation and in various gastrointestinal cancers.

Storage

Storage:

Store at -80°C.

The product is shipped with ice packs. Upon receipt, store it immediately at -80°C

Storage Buffer:

PBS only, pH7.3

For technical support and original validation data for this product please contact:

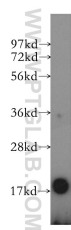
T: 4006900926

E: Proteintech-CN@ptglab.com

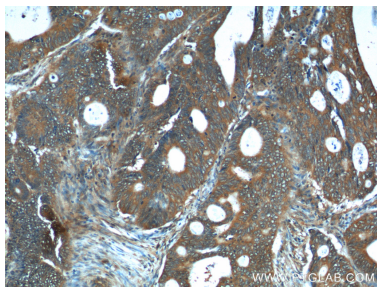
W: ptgcn.com

This product is exclusively available under Proteintech Group brand and is not available to purchase from any other manufacturer.

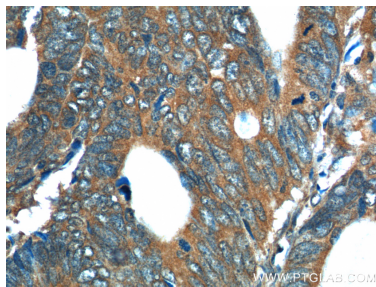
Selected Validation Data



SGC-7901 cells were subjected to SDS PAGE followed by western blot with 12268-1-AP (REG4 antibody) at dilution of 1:300 incubated at room temperature for 1.5 hours. This data was developed using the same antibody clone with 12268-1-PBS in a different storage buffer formulation.



Immunohistochemical analysis of paraffin-embedded human colon cancer tissue slide using 12268-1-AP (REG4 Antibody) at dilution of 1:200 (under 10x lens). This data was developed using the same antibody clone with 12268-1-PBS in a different storage buffer formulation.



Immunohistochemical analysis of paraffin-embedded human colon cancer tissue slide using 12268-1-AP (REG4 Antibody) at dilution of 1:200 (under 40x lens). This data was developed using the same antibody clone with 12268-1-PBS in a different storage buffer formulation.