

For Research Use Only

# SCAP Polyclonal antibody

Catalog Number: 12266-1-AP

7 Publications



## Basic Information

**Catalog Number:**

12266-1-AP

**Concentration:**

400 ug/ml

**Source:**

Rabbit

**Isotype:**

IgG

**Immunogen Catalog Number:**

AG2937

**GenBank Accession Number:**

BC020987

**GeneID (NCBI):**

22937

**UNIPROT ID:**

Q12770

**Full Name:**

SREBF chaperone

**Calculated MW:**

1279 aa, 140 kDa

**Observed MW:**

140 kDa

**Purification Method:**

Antigen affinity purification

**Recommended Dilutions:**

IP: 0.5-4.0 ug for 1.0-3.0 mg of total protein lysate

IHC: 1:50-1:500

## Applications

**Tested Applications:**

IHC, IP, ELISA

**Cited Applications:**

WB

**Species Specificity:**

human

**Cited Species:**

human, mouse

**Positive Controls:**

IP: HEK-293 cells,

IHC: mouse kidney tissue,

**Note-IHC: suggested antigen retrieval with TE buffer pH 9.0; (\*) Alternatively, antigen retrieval may be performed with citrate buffer pH 6.0**

## Background Information

SCAP is a regulatory protein that is required for the proteolytic cleavage of the sterol regulatory element-binding protein (SREBP). SCAP is an integral membrane protein located in the endoplasmic reticulum (ER). One of the cytosolic regions of SCAP contains a hexapeptide amino acid sequence, MELADL, that functions to detect cellular cholesterol. When cholesterol is present, SCAP undergoes a conformational change that prevents it from activating SREBP and cholesterol synthesis does not occur. SCAP has 4 isoforms with MW 140, 98, 96 and 85 kDa (refer to UniProt: Q12770).

## Notable Publications

Author	Pubmed ID	Journal	Application
Liang Wei Wang	31518366	PLoS Pathog	WB
Chong Wee Liew	24843127	Proc Natl Acad Sci U S A	WB
Naohiro Egawa	35568729	Sci Rep	WB

## Storage

**Storage:**

Store at -20°C. Stable for one year after shipment.

**Storage Buffer:**

PBS with 0.02% sodium azide and 50% glycerol, pH7.3

Aliquoting is unnecessary for -20°C storage

For technical support and original validation data for this product please contact:

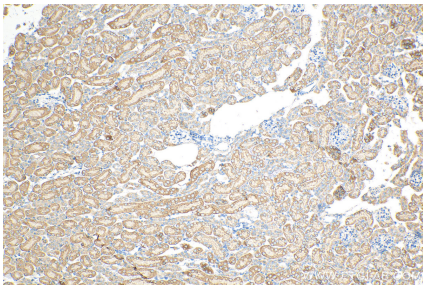
T: 4006900926

E: [Proteintech-CN@ptglab.com](mailto:Proteintech-CN@ptglab.com)

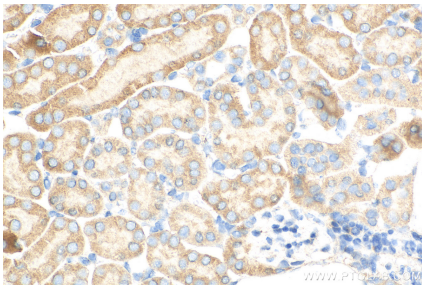
W: [ptgcn.com](http://ptgcn.com)

**This product is exclusively available under Proteintech Group brand and is not available to purchase from any other manufacturer.**

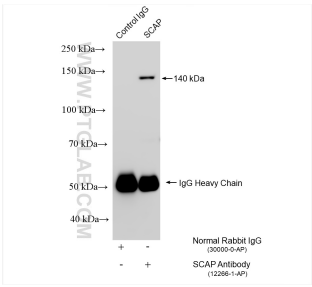
Selected Validation Data



Immunohistochemical analysis of paraffin-embedded mouse kidney tissue slide using 12266-1-AP (SCAP antibody) at dilution of 1:200 (under 10x lens). Heat mediated antigen retrieval with Tris-EDTA buffer (pH 9.0).



Immunohistochemical analysis of paraffin-embedded mouse kidney tissue slide using 12266-1-AP (SCAP antibody) at dilution of 1:200 (under 40x lens). Heat mediated antigen retrieval with Tris-EDTA buffer (pH 9.0).



IP result of anti-SCAP (IP:12266-1-AP, 4ug; Detection:12266-1-AP 1:600) with HEK-293 cells lysate 1610 ug.