

# ETFA Polyclonal antibody

Catalog Number: 12262-1-AP

5 Publications

## Basic Information

## Catalog Number:

12262-1-AP

## Size:

450 µg/ml

## Source:

Rabbit

## Isotype:

IgG

## Immunogen Catalog Number:

AG2931

## GenBank Accession Number:

BC015526

## GeneID (NCBI):

2108

## UNIPROT ID:

P13804

## Full Name:

electron-transfer-flavoprotein, alpha polypeptide

## Calculated MW:

30 kDa

## Observed MW:

30 kDa

## Purification Method:

Antigen affinity purification

## Recommended Dilutions:

WB 1:1000-1:3000

IHC 1:50-1:500

IF 1:50-1:500

## Applications

## Tested Applications:

FC, IF/ICC, IHC, WB, ELISA

## Cited Applications:

IF, WB

## Species Specificity:

human, mouse, rat

## Cited Species:

human, mouse

**Note-IHC: suggested antigen retrieval with TE buffer pH 9.0; (\*) Alternatively, antigen retrieval may be performed with citrate buffer pH 6.0**

## Positive Controls:

**WB**: Y79 cells, human ileum tissue, mouse small intestine tissue, rat small intestine tissue

**IHC**: human breast cancer tissue,

**IF**: HeLa cells,

## Background Information

Electron transfer flavoprotein (ETF) exists in the mitochondrial matrix as a heterodimer of 30 kD alpha subunits (ETFA) and 28 kD beta subunits (ETFB) and contains 1 flavin adenine dinucleotide (FAD) and 1 adenosine 5-prime monophosphate (AMP) per heterodimer. ETFA serves as a specific electron acceptor for several dehydrogenases, including five acyl-CoA dehydrogenases, glutaryl-CoA and sarcosine dehydrogenase.

## Notable Publications

Author	Pubmed ID	Journal	Application
Bin Jiang	35381197	Mol Cell	IF
Min-Zhi Peng	35727412	Cell Mol Life Sci	WB
Singaravelu Ragunath R	20181094	Proteome Sci	WB

## Storage

## Storage:

Store at -20°C. Stable for one year after shipment.

## Storage Buffer:

PBS with 0.02% sodium azide and 50% glycerol pH 7.3.

Aliquoting is unnecessary for -20°C storage

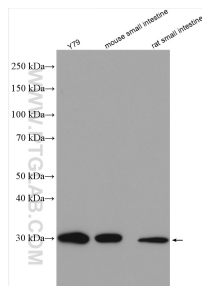
For technical support and original validation data for this product please contact:

T: 4006900926

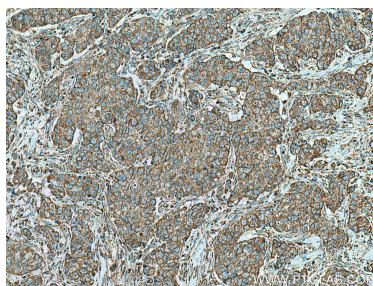
E: [Proteintech-CN@ptglab.com](mailto:Proteintech-CN@ptglab.com)W: [ptgcn.com](http://ptgcn.com)

**This product is exclusively available under Proteintech Group brand and is not available to purchase from any other manufacturer.**

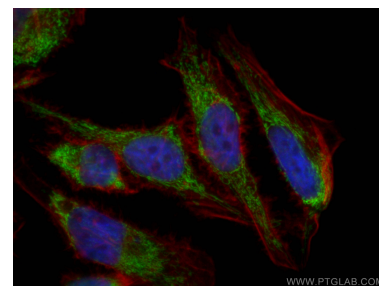
## Selected Validation Data



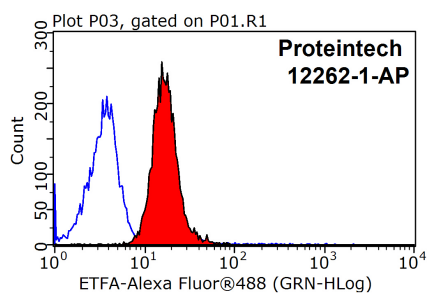
Various lysates were subjected to SDS PAGE followed by western blot with 12262-1-AP (ETFA antibody) at dilution of 1:2000 incubated at room temperature for 1.5 hours.



Immunohistochemical analysis of paraffin-embedded human breast cancer tissue slide using 12262-1-AP (ETFA antibody) at dilution of 1:200 (under 10x lens). Heat mediated antigen retrieval with Tris-EDTA buffer (pH 9.0).



Immunofluorescent analysis of (4% PFA) fixed HeLa cells using ETFA antibody (12262-1-AP) at dilution of 1:200 and CoraLite®488-Conjugated AffiniPure Goat Anti-Rabbit IgG(H+L), 594phalloidin (red).



1X10<sup>6</sup> MCF-7 cells were stained with 0.2ug ETFA antibody (12262-1-AP, red) and control antibody (blue). Fixed with 90% MeOH blocked with 3% BSA (30 min). Alexa Fluor 488-conjugated AffiniPure Goat Anti-Rabbit IgG(H+L) with dilution 1:1500.