

For Research Use Only

# SULF2 Polyclonal antibody, PBS Only

Catalog Number: 12260-1-PBS

Featured Product



## Basic Information

Catalog Number:

12260-1-PBS

Source:

Rabbit

Isotype:

IgG

Immunogen Catalog Number:

AG2915

GenBank Accession Number:

BC020962

GeneID (NCBI):

55959

UNIPROT ID:

Q8IWU5

Full Name:

sulfatase 2

Calculated MW:

870 aa, 96 kDa

Observed MW:

50 kDa, 130-150 kDa

Purification Method:

Antigen affinity purification

## Applications

Tested Applications:

WB, IHC, Indirect ELISA

Species Specificity:

human, mouse, rat

## Background Information

SULF2, also named as KIAA1247, belongs to the sulfatase family. It exhibits arylsulfatase activity and highly specific endoglucosamine-6-sulfatase activity. SULF2 can remove sulfate from the C-6 position of glucosamine within specific subregions of intact heparin. SULF2 has several forms: the unglycosylated 100 kDa SULF2, the glycosylated 120-150 kDa SULF2, the cleaved 72-75 kDa and 50 kDa SULF2.

## Storage

Storage:

Store at -80°C.

**The product is shipped with ice packs. Upon receipt, store it immediately at -80°C**

Storage Buffer:

PBS only, pH7.3

For technical support and original validation data for this product please contact:

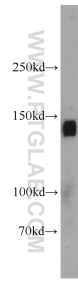
T: 4006900926

E: [Proteintech-CN@ptglab.com](mailto:Proteintech-CN@ptglab.com)

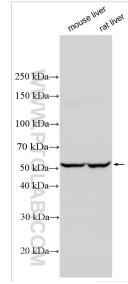
W: [ptgcn.com](http://ptgcn.com)

**This product is exclusively available under Proteintech Group brand and is not available to purchase from any other manufacturer.**

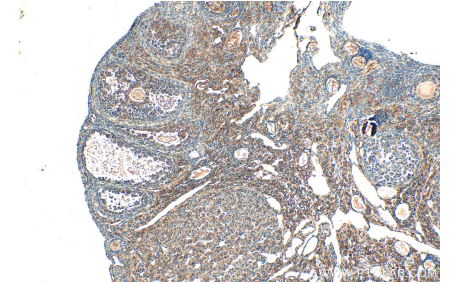
## Selected Validation Data



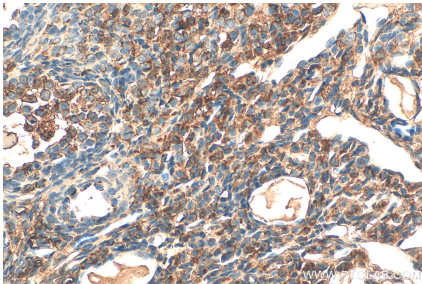
mouse liver tissue were subjected to SDS PAGE followed by western blot with 12260-1-AP (SULF2 antibody) at dilution of 1:500 incubated at room temperature for 1.5 hours. This data was developed using the same antibody clone with 12260-1-PBS in a different storage buffer formulation.



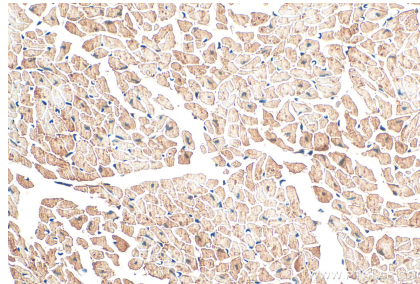
Various lysates were subjected to SDS PAGE followed by western blot with 12260-1-AP (SULF2 antibody) at dilution of 1:3000 incubated at room temperature for 1.5 hours. This data was developed using the same antibody clone with 12260-1-PBS in a different storage buffer formulation.



Immunohistochemical analysis of paraffin-embedded mouse ovary tissue slide using 12260-1-AP (SULF2 antibody) at dilution of 1:200 (under 10x lens). Heat mediated antigen retrieval with Tris-EDTA buffer (pH 9.0). This data was developed using the same antibody clone with 12260-1-PBS in a different storage buffer formulation.



Immunohistochemical analysis of paraffin-embedded mouse ovary tissue slide using 12260-1-AP (SULF2 antibody) at dilution of 1:200 (under 40x lens). Heat mediated antigen retrieval with Tris-EDTA buffer (pH 9.0). This data was developed using the same antibody clone with 12260-1-PBS in a different storage buffer formulation.



Immunohistochemical analysis of paraffin-embedded mouse heart tissue slide using 12260-1-AP (SULF2 antibody) at dilution of 1:500 (under 40x lens). Heat mediated antigen retrieval with Tris-EDTA buffer (pH 9.0). This data was developed using the same antibody clone with 12260-1-PBS in a different storage buffer formulation.