

For Research Use Only

Calpastatin Polyclonal antibody, PBS Only

Catalog Number: 12250-1-PBS



Basic Information

Catalog Number:

12250-1-PBS

Source:

Rabbit

Isotype:

IgG

Immunogen Catalog Number:

AG2897

GenBank Accession Number:

BC013579

GeneID (NCBI):

831

UNIPROT ID:

P20810

Full Name:

calpastatin

Calculated MW:

667 aa, 72 kDa

Observed MW:

110 kDa

Purification Method:

Antigen affinity purification

Applications

Tested Applications:

WB, IHC, IF/ICC, FC (Intra), IP, Indirect ELISA

Species Specificity:

human

Background Information

Calpastatin (CAST) is an endogenous protein that specifically inhibits the activity of calpains, a family of calcium-dependent proteases involved in numerous cellular processes. The CAST gene encodes calpastatin, which contains multiple calpain-inhibiting domains that bind to the active site of calpain, preventing it from performing its functions. Calpastatin is found in the cytosol and plays a key role in regulating intracellular proteolysis, with malfunctions in the calpain-calpastatin system linked to various diseases, including autoimmune disorders and neurodegenerative conditions.

Storage

Storage:

Store at -80°C.

The product is shipped with ice packs. Upon receipt, store it immediately at -80°C

Storage Buffer:

PBS only, pH7.3

For technical support and original validation data for this product please contact:

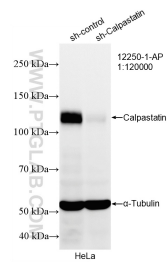
T: 4006900926

E: Proteintech-CN@ptglab.com

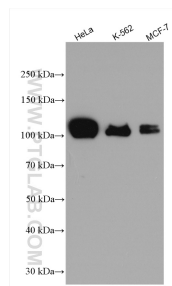
W: ptgcn.com

This product is exclusively available under Proteintech Group brand and is not available to purchase from any other manufacturer.

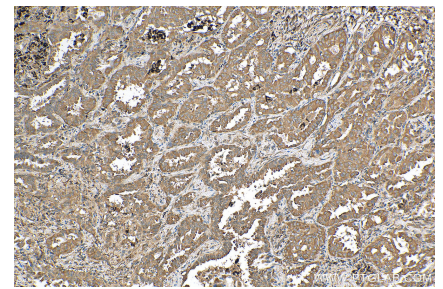
Selected Validation Data



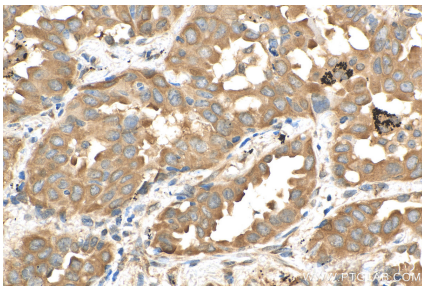
WB result of Calpastatin antibody (12250-1-AP; 1:120000; incubated at room temperature for 1.5 hours) with sh-Control and sh-Calpastatin transfected HeLa cells. This data was developed using the same antibody clone with 12250-1-PBS in a different storage buffer formulation.



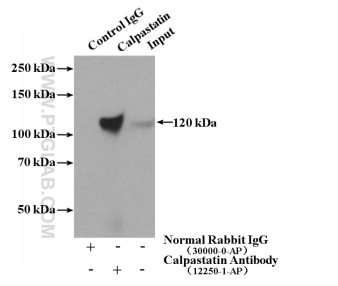
Various lysates were subjected to SDS PAGE followed by western blot with 12250-1-AP (Calpastatin antibody) at dilution of 1:7000 incubated at room temperature for 1.5 hours. This data was developed using the same antibody clone with 12250-1-PBS in a different storage buffer formulation.



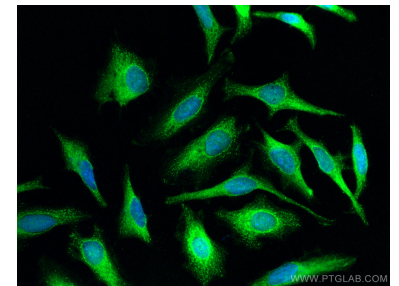
Immunohistochemical analysis of paraffin-embedded human lung cancer tissue slide using 12250-1-AP (Calpastatin antibody) at dilution of 1:400 (under 10x lens). Heat mediated antigen retrieval with Tris-EDTA buffer (pH 9.0). This data was developed using the same antibody clone with 12250-1-PBS in a different storage buffer formulation.



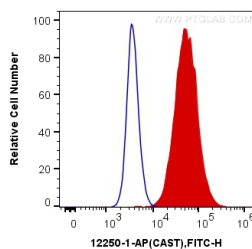
Immunohistochemical analysis of paraffin-embedded human lung cancer tissue slide using 12250-1-AP (Calpastatin antibody) at dilution of 1:400 (under 40x lens). Heat mediated antigen retrieval with Tris-EDTA buffer (pH 9.0). This data was developed using the same antibody clone with 12250-1-PBS in a different storage buffer formulation.



IP result of anti-Calpastatin (IP:12250-1-AP, 4ug; Detection:12250-1-AP 1:1000) with K-562 cells lysate 4000ug. This data was developed using the same antibody clone with 12250-1-PBS in a different storage buffer formulation.



Immunofluorescent analysis of (-20°C Methanol) fixed HeLa cells using Calpastatin antibody (12250-1-AP) at dilution of 1:200 and CoraLite@488-Conjugated AffiniPure Goat Anti-Rabbit IgG(H+L). This data was developed using the same antibody clone with 12250-1-PBS in a different storage buffer formulation.



1x10⁶ HeLa cells were intracellularly stained with 0.2 ug Anti-Human Calpastatin (12250-1-AP) and CoraLite@488-Conjugated AffiniPure Goat Anti-Rabbit IgG(H+L) at dilution 1:1000 (red), or 0.2 ug Control Antibody. Cells were fixed with 4% PFA and permeabilized with Flow Cytometry Perm Buffer. This data was developed using the same antibody clone with 12250-1-PBS in a different storage buffer formulation.