

CHURC1 Polyclonal antibody

Catalog Number: 12247-1-AP

Basic Information

Catalog Number:

12247-1-AP

Size:

147 µg/ml

Source:

Rabbit

Isotype:

IgG

Immunogen Catalog Number:

AG2892

GenBank Accession Number:

BC020550

GeneID (NCBI):

91612

UNIPROT ID:

Q8WUH1

Full Name:

churchill domain containing 1

Calculated MW:

13 kDa

Observed MW:

13 kDa

Purification Method:

Antigen affinity purification

Recommended Dilutions:

WB 1:200-1:1000

IHC 1:20-1:200

Applications

Tested Applications:

IHC, WB, ELISA

Species Specificity:

human, mouse, rat

Note-IHC: suggested antigen retrieval with TE buffer pH 9.0; (*) Alternatively, antigen retrieval may be performed with citrate buffer pH 6.0

Positive Controls:

WB : mouse skin tissue, HeLa cells, mouse liver tissue

IHC : human brain tissue, human gliomas tissue, human kidney tissue

Background Information

CHURC1 (churchill domain containing 1), also known as C14orf52 or chch. The function of CHURC1 has not been widely studied, and is yet to be fully elucidated. It may be a transcriptional activator that mediates FGF signaling during neural development. The MW of this protein is 13 kDa, and Catalog# 12247-1-AP specially recognises the 13 kDa protein.

Storage

Storage:

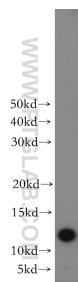
Store at -20°C. Stable for one year after shipment.

Storage Buffer:

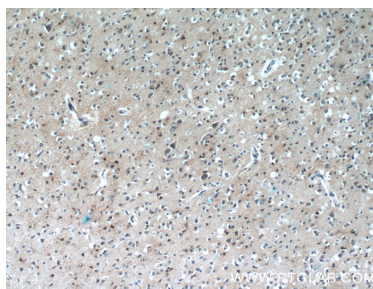
PBS with 0.02% sodium azide and 50% glycerol pH 7.3.

Aliquoting is unnecessary for -20°C storage

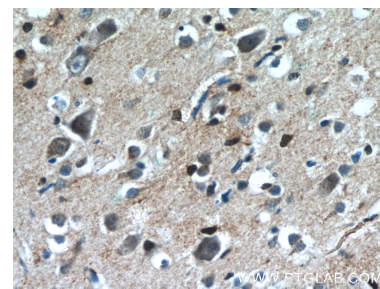
Selected Validation Data



mouse skin tissue were subjected to SDS PAGE followed by western blot with 12247-1-AP (CHURC1 antibody) at dilution of 1:300 incubated at room temperature for 1.5 hours.



Immunohistochemical analysis of paraffin-embedded human brain tissue slide using 12247-1-AP (CHURC1 Antibody) at dilution of 1:50 (under 10x lens).



Immunohistochemical analysis of paraffin-embedded human brain tissue slide using 12247-1-AP (CHURC1 Antibody) at dilution of 1:50 (under 40x lens).