

For Research Use Only

# CBY1 Polyclonal antibody

Catalog Number: 12239-1-AP **3 Publications**



## Basic Information

<b>Catalog Number:</b> 12239-1-AP	<b>GenBank Accession Number:</b> BC016139	<b>Purification Method:</b> Antigen affinity purification
<b>Size:</b> 550 µg/ml	<b>GeneID (NCBI):</b> 25776	<b>Recommended Dilutions:</b> WB 1:500-1:2000 IP 0.5-4.0 µg for 1.0-3.0 mg of total protein lysate IHC 1:20-1:200
<b>Source:</b> Rabbit	<b>UNIPROT ID:</b> Q9Y3M2	
<b>Isotype:</b> IgG	<b>Full Name:</b> chibby homolog 1 (Drosophila)	
<b>Immunogen Catalog Number:</b> AG2882	<b>Calculated MW:</b> 126 aa, 14 kDa	
	<b>Observed MW:</b> 30-35 kDa	

## Applications

<b>Tested Applications:</b> IHC, IP, WB, ELISA	<b>Positive Controls:</b> WB : mouse liver tissue, mouse kidney tissue IP : mouse liver tissue, IHC : human kidney tissue, human heart tissue
<b>Cited Applications:</b> WB, IF, IHC	
<b>Species Specificity:</b> human, mouse, rat	
<b>Cited Species:</b> human, mouse	
<b>Note-IHC: suggested antigen retrieval with TE buffer pH 9.0; (*) Alternatively, antigen retrieval may be performed with citrate buffer pH 6.0</b>	

## Background Information

### Notable Publications

Author	Pubmed ID	Journal	Application
Michael C Burke	25313408	J Cell Biol	WB
Lilong Guo	33811421	Dev Dyn	WB, IF
Gang Ren	37986347	Medicine (Baltimore)	IHC

## Storage

**Storage:**  
Store at -20°C. Stable for one year after shipment.  
**Storage Buffer:**  
PBS with 0.02% sodium azide and 50% glycerol pH 7.3.  
Aliquoting is unnecessary for -20°C storage

For technical support and original validation data for this product please contact:

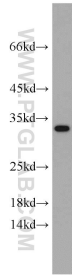
T: 4006900926

E: [Proteintech-CN@ptglab.com](mailto:Proteintech-CN@ptglab.com)

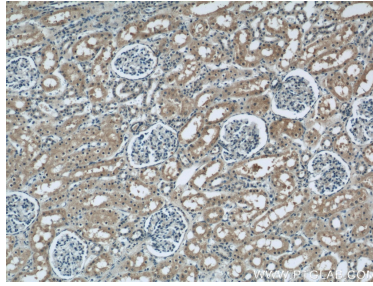
W: [ptgcn.com](http://ptgcn.com)

**This product is exclusively available under Proteintech Group brand and is not available to purchase from any other manufacturer.**

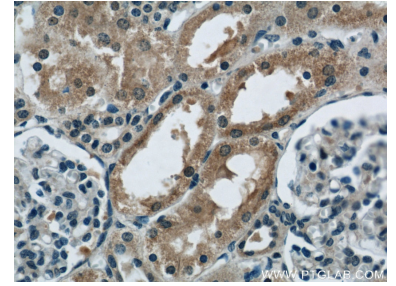
## Selected Validation Data



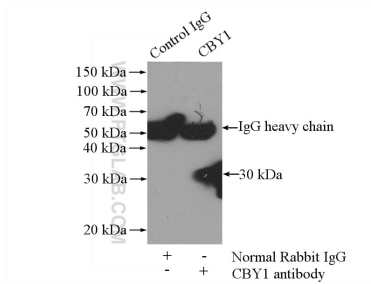
mouse liver tissue were subjected to SDS PAGE followed by western blot with 12239-1-AP (CBY1 antibody) at dilution of 1:500 incubated at room temperature for 1.5 hours.



Immunohistochemical analysis of paraffin-embedded human kidney using 12239-1-AP (CBY1 antibody) at dilution of 1:50 (under 10x lens).



Immunohistochemical analysis of paraffin-embedded human kidney using 12239-1-AP (CBY1 antibody) at dilution of 1:50 (under 40x lens).



IP result of anti-CBY1 (IP:12239-1-AP, 4ug; Detection:12239-1-AP 1:500) with mouse liver tissue lysate 4000ug.