

For Research Use Only

# SH2B1 Polyclonal antibody, PBS Only

Catalog Number:12226-1-PBS



## Basic Information

Catalog Number:

12226-1-PBS

Source:

Rabbit

Isotype:

IgG

Immunogen Catalog Number:

AG2863

GenBank Accession Number:

BC010704

GeneID (NCBI):

25970

UNIPROT ID:

Q9NRF2

Full Name:

SH2B adaptor protein 1

Calculated MW:

426 aa, 45 kDa

Observed MW:

70-80 kDa

Purification Method:

Antigen affinity purification

## Applications

Tested Applications:

WB, IHC, IF/ICC, IP, Indirect ELISA

Species Specificity:

human

## Background Information

SH2B1 is a member of the SH2-domain containing mediators family. SH2B1 has been shown to interact with INS receptor, Grb2, TrkA and Janus kinase 2. Variations close to or in the SH2B1 gene have been found to associate with obesity in two large genome wide association studies of body mass index (PMID: 19079260). SH2B1 deletions are associated with severe early-onset obesity (PMID: 19966786).

## Storage

Storage:

Store at -80°C.

**The product is shipped with ice packs. Upon receipt, store it immediately at -80°C**

Storage Buffer:

PBS only, pH7.3

For technical support and original validation data for this product please contact:

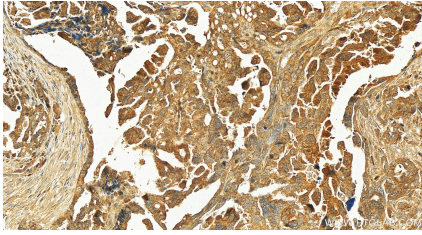
T: 4006900926

E: [Proteintech-CN@ptglab.com](mailto:Proteintech-CN@ptglab.com)

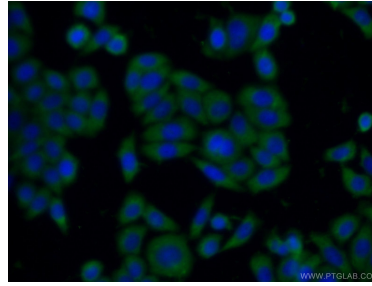
W: [ptgcn.com](http://ptgcn.com)

**This product is exclusively available under Proteintech Group brand and is not available to purchase from any other manufacturer.**

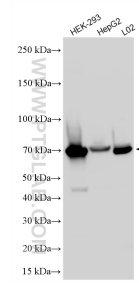
## Selected Validation Data



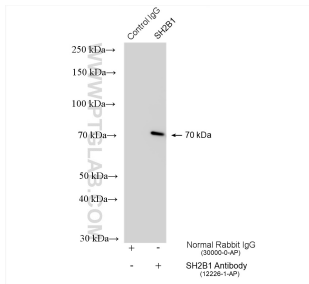
Immunohistochemical analysis of paraffin-embedded human ovarian cancer slide using 12226-1-AP (SH2B1 antibody) at dilution of 1:400 (under 20x lens). Heat mediated antigen retrieval with Tris-EDTA buffer (pH 9.0). This data was developed using the same antibody clone with 12226-1-PBS in a different storage buffer formulation.



Immunofluorescent analysis of HeLa cells using 12226-1-AP (SH2B1 antibody) at dilution of 1:50 and Alexa Fluor 488-conjugated AffiniPure Goat Anti-Rabbit IgG(H+L). This data was developed using the same antibody clone with 12226-1-PBS in a different storage buffer formulation.



Various lysates were subjected to SDS PAGE followed by western blot with 12226-1-AP (SH2B1 antibody) at dilution of 1:1000 incubated at room temperature for 1.5 hours. This data was developed using the same antibody clone with 12226-1-PBS in a different storage buffer formulation.



IP result of anti-SH2B1 (IP:12226-1-AP, 4ug; Detection:12226-1-AP 1:1500) with HepG2 cells lysate 1080 ug. This data was developed using the same antibody clone with 12226-1-PBS in a different storage buffer formulation.