

For Research Use Only

# TOMM34 Polyclonal antibody

Catalog Number: 12196-1-AP

Featured Product

4 Publications



## Basic Information

### Catalog Number:

12196-1-AP

### Size:

500 µg/ml

### Source:

Rabbit

### Isotype:

IgG

### Immunogen Catalog Number:

AG2834

### GenBank Accession Number:

BC014907

### GeneID (NCBI):

10953

### UNIPROT ID:

Q15785

### Full Name:

translocase of outer mitochondrial membrane 34

### Calculated MW:

309 aa, 35 kDa

### Observed MW:

31-35 kDa

### Purification Method:

Antigen affinity purification

### Recommended Dilutions:

WB 1:500-1:2000

IP 0.5-4.0 µg for 1.0-3.0 mg of total protein lysate

IHC 1:2000-1:8000

## Applications

### Tested Applications:

IHC, IP, WB, ELISA

### Cited Applications:

WB, IHC

### Species Specificity:

human, mouse, rat

### Cited Species:

human, mouse

**Note-IHC: suggested antigen retrieval with TE buffer pH 9.0; (\*) Alternatively, antigen retrieval may be performed with citrate buffer pH 6.0**

### Positive Controls:

WB : A375 cells, HeLa cells, PC-3 cells

IP : HeLa cells,

IHC : human urothelial carcinoma tissue,

## Background Information

### Notable Publications

Author	Pubmed ID	Journal	Application
Jeremy A Whitson	28951044	Free Radic Biol Med	WB
Yunyi Huang	36367442	J Oral Pathol Med	WB
David C Hondius	33492460	Acta Neuropathol	IHC

## Storage

### Storage:

Store at -20°C. Stable for one year after shipment.

### Storage Buffer:

PBS with 0.02% sodium azide and 50% glycerol pH 7.3.

Aliquoting is unnecessary for -20°C storage

For technical support and original validation data for this product please contact:

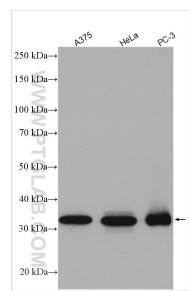
T: 4006900926

E: [Proteintech-CN@ptglab.com](mailto:Proteintech-CN@ptglab.com)

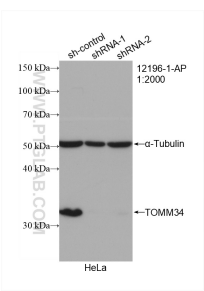
W: [ptgcn.com](http://ptgcn.com)

This product is exclusively available under Proteintech Group brand and is not available to purchase from any other manufacturer.

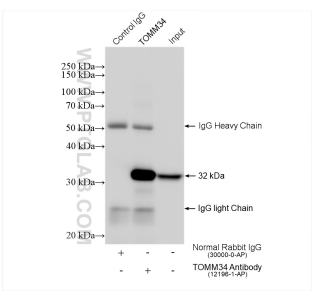
Selected Validation Data



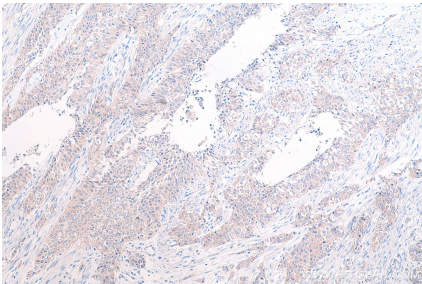
Various lysates were subjected to SDS PAGE followed by western blot with 12196-1-AP (TOMM34 antibody) at dilution of 1:1000 incubated at room temperature for 1.5 hours.



WB result of TOMM34 antibody (12196-1-AP; 1:2000; incubated at room temperature for 1.5 hours) with sh-Control and sh-TOMM34 transfected HeLa cells.



IP result of anti-TOMM34 (IP:12196-1-AP, 4ug; Detection:12196-1-AP 1:2000) with HeLa cells lysate 1320 ug.



Immunohistochemical analysis of paraffin-embedded human urothelial carcinoma tissue slide using 12196-1-AP (TOMM34 antibody) at dilution of 1:4000 (under 10x lens). Heat mediated antigen retrieval with Tris-EDTA buffer (pH 9.0).