

For Research Use Only

SPSB1 Polyclonal antibody, PBS Only

Catalog Number: 12194-1-PBS

Featured Product



Basic Information

Catalog Number:

12194-1-PBS

Source:

Rabbit

Isotype:

IgG

Immunogen Catalog Number:

AG2832

GenBank Accession Number:

BC015711

GeneID (NCBI):

80176

UNIPROT ID:

Q96BD6

Full Name:

splA/ryanodine receptor domain and SOCS box containing 1

Calculated MW:

273 aa, 31 kDa

Observed MW:

40 kDa

Purification Method:

Antigen affinity purification

Applications

Tested Applications:

WB, Indirect ELISA

Species Specificity:

human, mouse

Background Information

SPSB1, also known as Single-stranded DNA binding protein 1 (SSB1), is a member of the single-stranded DNA binding protein (SSB) family. It plays a pivotal role in the DNA damage response. As an early responder, SSB1 promptly associates with exposed single-strand DNA to shield it from degradation by various nucleases present in the cellular milieu.

Storage

Storage:

Store at -80°C.

The product is shipped with ice packs. Upon receipt, store it immediately at -80°C

Storage Buffer:

PBS only, pH7.3

For technical support and original validation data for this product please contact:

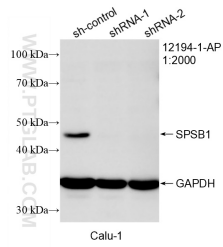
T: 4006900926

E: Proteintech-CN@ptglab.com

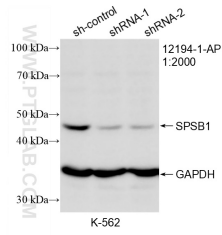
W: ptgcn.com

This product is exclusively available under Proteintech Group brand and is not available to purchase from any other manufacturer.

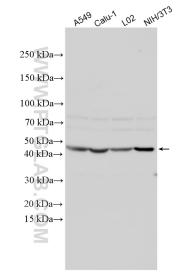
Selected Validation Data



WB result of SPSB1 antibody (12194-1-AP; 1:2000; incubated at room temperature for 1.5 hours) with sh-Control and sh-SPSB1 transfected Calu-1 cells. This data was developed using the same antibody clone with 12194-1-PBS in a different storage buffer formulation.



WB result of SPSB1 antibody (12194-1-AP; 1:2000; incubated at room temperature for 1.5 hours) with sh-Control and sh-SPSB1 transfected K-562 cells. This data was developed using the same antibody clone with 12194-1-PBS in a different storage buffer formulation.



Various lysates were subjected to SDS PAGE followed by western blot with 12194-1-AP (SPSB1 antibody) at dilution of 1:2000 incubated at room temperature for 1.5 hours. This data was developed using the same antibody clone with 12194-1-PBS in a different storage buffer formulation.