

For Research Use Only

EFHD2 Polyclonal antibody

Catalog Number: 12181-1-AP



Basic Information

Catalog Number: 12181-1-AP	GenBank Accession Number: BC013648	Purification Method: Antigen affinity purification
Size: 600 µg/ml	GeneID (NCBI): 79180	Recommended Dilutions: IHC 1:20-1:200
Source: Rabbit	UNIPROT ID: Q96C19	
Isotype: IgG	Full Name: EF-hand domain family, member D2	
Immunogen Catalog Number: AG2826	Calculated MW: 240 aa, 27 kDa	

Applications

Tested Applications: IHC, ELISA	Positive Controls: IHC : human medulloblastoma tissue,
Species Specificity: human	

Note-IHC: suggested antigen retrieval with TE buffer pH 9.0; (*) Alternatively, antigen retrieval may be performed with citrate buffer pH 6.0

Background Information

EFHD2, also known as Swiprosin-1, is a cytoskeletal protein that has been shown to influence dimerization in a Ca²⁺-dependent manner. The expression of EFHD2 was first observed in CD8⁺ T cells. This protein has also been observed in B-cells, lung, brain, and spleen.

Storage

Storage:
Store at -20°C. Stable for one year after shipment.
Storage Buffer:
PBS with 0.02% sodium azide and 50% glycerol pH 7.3.
Aliquoting is unnecessary for -20°C storage

For technical support and original validation data for this product please contact:

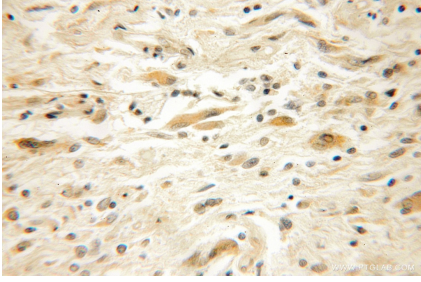
T: 4006900926

E: Proteintech-CN@ptglab.com

W: ptgcn.com

This product is exclusively available under Proteintech Group brand and is not available to purchase from any other manufacturer.

Selected Validation Data



Immunohistochemical analysis of paraffin-embedded human medulloblastoma using 12181-1-AP (EFHD2 antibody) at dilution of 1:50 (under 10x lens).