

# SMNDC1 Polyclonal antibody

Catalog Number: 12178-1-AP

## Basic Information

**Catalog Number:**

12178-1-AP

**Size:**

850 ug/ml

**Source:**

Rabbit

**Isotype:**

IgG

**Immunogen Catalog Number:**

AG2822

**GenBank Accession Number:**

BC011234

**GeneID (NCBI):**

10285

**UNIPROT ID:**

O75940

**Full Name:**

survival motor neuron domain containing 1

**Calculated MW:**

238 aa, 27 kDa

**Observed MW:**

32 kDa

**Purification Method:**

Antigen affinity purification

**Recommended Dilutions:**

WB 1:1000-1:3000

IHC 1:50-1:500

IF/ICC 1:200-1:800

## Applications

**Tested Applications:**

WB, IHC, IF/ICC, ELISA

**Species Specificity:**

human, mouse, rat

**Note-IHC: suggested antigen retrieval with TE buffer pH 9.0; (\*) Alternatively, antigen retrieval may be performed with citrate buffer pH 6.0**

**Positive Controls:**

**WB:** mouse heart tissue, human heart tissue, human lung tissue, human liver tissue, mouse skeletal muscle tissue, rat heart tissue

**IHC:** human lymphoma tissue,

**IF/ICC:** HepG2 cells,

## Background Information

Survival motor neuron domain-containing protein 1 (SMNDC1), also known as survival of motor neuron-related-splicing factor 30 (SPF30) or SMN-related protein (SMNR), is a constituent of the spliceosome complex that plays an essential role in spliceosome assembly by recruiting U4/U5/U6 tri-snRNP to the pre-spliceosomal complex (PMID: 9817934; 11331595; 30904945). Both SMNDC1 and SMN1 contain a highly conserved central Tudor domain which functions as a protein-protein interaction surface and mediates binding to the spliceosomal Sm proteins (PMID: 11331595).

## Storage

**Storage:**

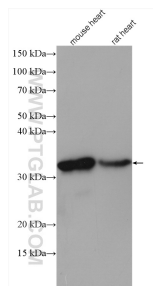
Store at -20°C. Stable for one year after shipment.

**Storage Buffer:**

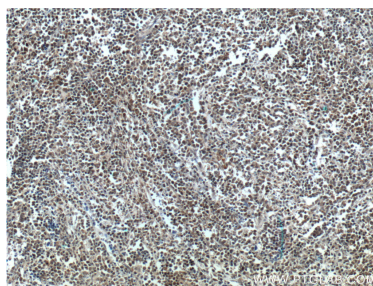
PBS with 0.02% sodium azide and 50% glycerol pH 7.3.

Aliquoting is unnecessary for -20°C storage

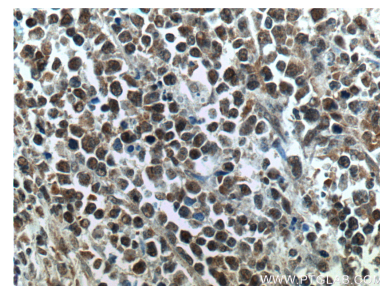
## Selected Validation Data



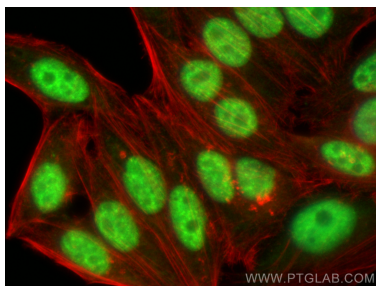
Various lysates were subjected to SDS PAGE followed by western blot with 12178-1-AP (SMNDC1 antibody) at dilution of 1:3000 incubated at room temperature for 1.5 hours.



Immunohistochemical analysis of paraffin-embedded human lymphoma tissue slide using 12178-1-AP (SMNDC1 Antibody) at dilution of 1:200 (under 10x lens).



Immunohistochemical analysis of paraffin-embedded human lymphoma tissue slide using 12178-1-AP (SMNDC1 Antibody) at dilution of 1:200 (under 40x lens).



Immunofluorescent analysis of (4% PFA) fixed HepG2 cells using SMNDC1 antibody (12178-1-AP) at dilution of 1:400 and CoraLite®488-Conjugated Goat Anti-Rabbit IgG(H+L) (SA00013-2), CL594-phalloidin (red).