

For Research Use Only

# FKBP10/FKBP65 Polyclonal antibody, PBS Only

Catalog Number: 12172-1-PBS

Featured Product



## Basic Information

Catalog Number:

12172-1-PBS

Size:

1 mg/ml

Source:

Rabbit

Isotype:

IgG

Immunogen Catalog Number:

AG2814

GenBank Accession Number:

BC016467

GeneID (NCBI):

60681

UNIPROT ID:

Q96AY3

Full Name:

FK506 binding protein 10, 65 kDa

Calculated MW:

582 aa, 64 kDa

Observed MW:

64 kDa

Purification Method:

Antigen affinity purification

## Applications

Tested Applications:

WB, IHC, IP, Indirect ELISA

Species Specificity:

human, mouse

## Background Information

FKBP10, also known as FKBP65, is a 65 kDa FK506 binding protein that is a member of the FKBP-type peptidyl-prolyl cis/trans isomerase family. This protein localizes to the endoplasmic reticulum and acts as a molecular chaperone and binding partner of type I collagen. FKBP65 is expressed in developing tissues and re-expressed in adult tissues following injury. As documented, FKBP10 has been detected to play important roles in the initiation and progression of cancers.

## Storage

Storage:

Store at -80°C.

**The product is shipped with ice packs. Upon receipt, store it immediately at -80°C**

Storage Buffer:

PBS Only

For technical support and original validation data for this product please contact:

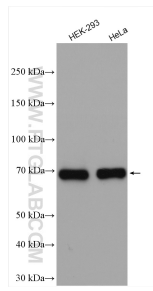
T: 4006900926

E: [Proteintech-CN@ptglab.com](mailto:Proteintech-CN@ptglab.com)

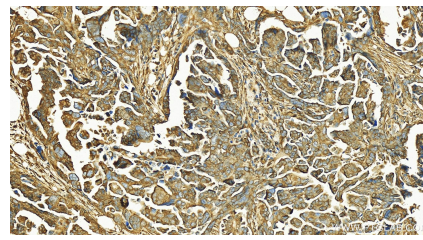
W: [ptgcn.com](http://ptgcn.com)

**This product is exclusively available under Proteintech Group brand and is not available to purchase from any other manufacturer.**

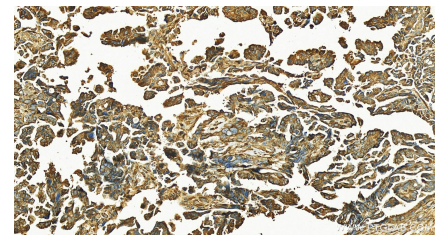
## Selected Validation Data



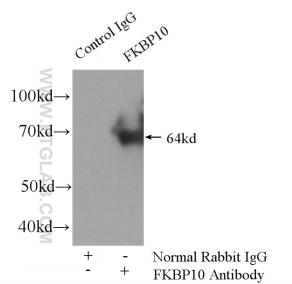
Various lysates were subjected to SDS PAGE followed by western blot with 12172-1-AP (FKBP65 antibody) at dilution of 1:8000 incubated at room temperature for 1.5 hours. This data was developed using the same antibody clone with 12172-1-PBS in a different storage buffer formulation.



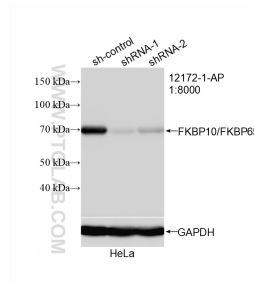
Immunohistochemical analysis of paraffin-embedded human ovarian cancer slide using 12172-1-AP (FKBP10/FKBP65 antibody) at dilution of 1:200 (under 20x lens). Heat mediated antigen retrieval with Tris-EDTA buffer (pH 9.0). This data was developed using the same antibody clone with 12172-1-PBS in a different storage buffer formulation.



Immunohistochemical analysis of paraffin-embedded human ovarian cancer slide using 12172-1-AP (FKBP10/FKBP65 antibody) at dilution of 1:200 (under 20x lens). Heat mediated antigen retrieval with Tris-EDTA buffer (pH 9.0). This data was developed using the same antibody clone with 12172-1-PBS in a different storage buffer formulation.



IP result of anti-FKBP10/FKBP65 (IP:12172-1-AP, 4ug; Detection:12172-1-AP 1:600) with HEK-293 cells lysate 2800ug. This data was developed using the same antibody clone with 12172-1-PBS in a different storage buffer formulation.



WB result of FKBP10/FKBP65 antibody (12172-1-AP; 1:8000; incubated at room temperature for 1.5 hours) with sh-Control and sh-FKBP10/FKBP65 transfected HeLa cells. This data was developed using the same antibody clone with 12172-1-PBS in a different storage buffer formulation.