

For Research Use Only

# FKBP10/FKBP65 Polyclonal antibody

Catalog Number: 12172-1-AP

Featured Product

21 Publications



## Basic Information

### Catalog Number:

12172-1-AP

### Concentration:

650 ug/ml

### Source:

Rabbit

### Isotype:

IgG

### Immunogen Catalog Number:

AG2814

### GenBank Accession Number:

BC016467

### GeneID (NCBI):

60681

### UNIPROT ID:

Q96AY3

### Full Name:

FK506 binding protein 10, 65 kDa

### Calculated MW:

582 aa, 64 kDa

### Observed MW:

64 kDa

### Purification Method:

Antigen affinity purification

### Recommended Dilutions:

WB 1:2000-1:16000

IP 0.5-4.0 ug for 1.0-3.0 mg of total protein lysate

IHC 1:50-1:500

## Applications

### Tested Applications:

WB, IHC, IP, ELISA

### Cited Applications:

WB, IHC, IF, IP

### Species Specificity:

human, mouse

### Cited Species:

human, mouse, chicken

**Note-IHC: suggested antigen retrieval with TE buffer pH 9.0; (\*) Alternatively, antigen retrieval may be performed with citrate buffer pH 6.0**

### Positive Controls:

**WB** : HEK-293 cells, human brain tissue, human placenta tissue, human kidney tissue, fetal human brain tissue, HeLa cells, NIH/3T3 cells

**IP** : HEK-293 cells,

**IHC** : human ovary cancer tissue,

## Background Information

FKBP10, also known as FKBP65, is a 65 kDa FK506 binding protein that is a member of the FKBP-type peptidyl-prolyl cis/trans isomerase family. This protein localizes to the endoplasmic reticulum and acts as a molecular chaperone and binding partner of type I collagen. FKBP65 is expressed in developing tissues and re-expressed in adult tissues following injury. As documented, FKBP10 has been detected to play important roles in the initiation and progression of cancers.

## Notable Publications

Author	Pubmed ID	Journal	Application
Hiroyuki Yamaguchi	32988591	Biochem Biophys Res Commun	IHC, WB
Stefan Schorr	32133789	FEBS J	WB
Rutger A F Gjaltema	27298363	Proc Natl Acad Sci U S A	WB, IF

## Storage

### Storage:

Store at -20°C. Stable for one year after shipment.

### Storage Buffer:

PBS with 0.02% sodium azide and 50% glycerol pH 7.3.

Aliquoting is unnecessary for -20°C storage

For technical support and original validation data for this product please contact:

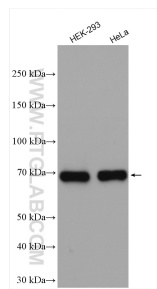
T: 4006900926

E: [Proteintech-CN@ptglab.com](mailto:Proteintech-CN@ptglab.com)

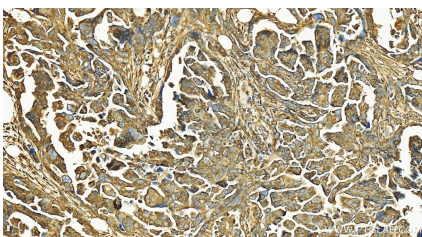
W: [ptgcn.com](http://ptgcn.com)

**This product is exclusively available under Proteintech Group brand and is not available to purchase from any other manufacturer.**

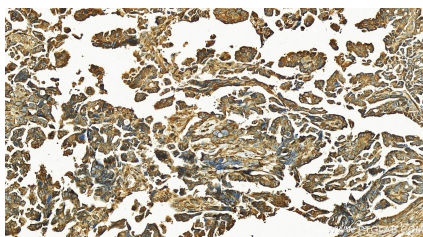
Selected Validation Data



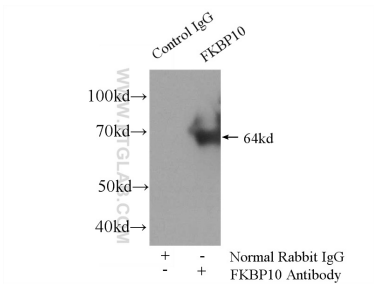
Various lysates were subjected to SDS PAGE followed by western blot with 12172-1-AP (FKBP65 antibody) at dilution of 1:8000 incubated at room temperature for 1.5 hours.



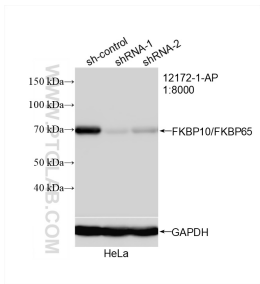
Immunohistochemical analysis of paraffin-embedded human ovarian cancer slide using 12172-1-AP (FKBP10/FKBP65 antibody) at dilution of 1:200 (under 20x lens). Heat mediated antigen retrieval with Tris-EDTA buffer (pH 9.0).



Immunohistochemical analysis of paraffin-embedded human ovarian cancer slide using 12172-1-AP (FKBP10/FKBP65 antibody) at dilution of 1:200 (under 20x lens). Heat mediated antigen retrieval with Tris-EDTA buffer (pH 9.0).



IP result of anti-FKBP10/FKBP65 (IP:12172-1-AP, 4ug; Detection:12172-1-AP 1:600) with HEK-293 cells lysate 2800ug.



WB result of FKBP10/FKBP65 antibody (12172-1-AP; 1:8000; incubated at room temperature for 1.5 hours) with sh-Control and sh-FKBP10/FKBP65 transfected HeLa cells.