

For Research Use Only

RTF1 Polyclonal antibody, PBS Only

Catalog Number: 12170-1-PBS



Basic Information

Catalog Number:

12170-1-PBS

Source:

Rabbit

Isotype:

IgG

Immunogen Catalog Number:

AG2812

GenBank Accession Number:

BC015052

GeneID (NCBI):

23168

UNIPROT ID:

Q92541

Full Name:

Rtf1, Paf1/RNA polymerase II complex component, homolog (S. cerevisiae)

Calculated MW:

585aa,67 kDa; 710aa,80 kDa

Observed MW:

100 kDa

Purification Method:

Antigen affinity purification

Applications

Tested Applications:

WB, IHC, IP, Indirect ELISA

Species Specificity:

human, mouse, rat

Background Information

RTF1 (RNA polymerase-associated protein RTF1 homolog) is a multifunctional component of the Paf1 complex that regulates gene expression by directing cotranscriptional histone modification (PMID: 17576814). RTF1 is essential for global methylation of H3-Lys4 and H3-Lys79, but not H3-Lys36 (PMID: 12876293).

Storage

Storage:

Store at -80°C.

The product is shipped with ice packs. Upon receipt, store it immediately at -80°C

Storage Buffer:

PBS only, pH7.3

For technical support and original validation data for this product please contact:

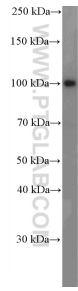
T: 4006900926

E: Proteintech-CN@ptglab.com

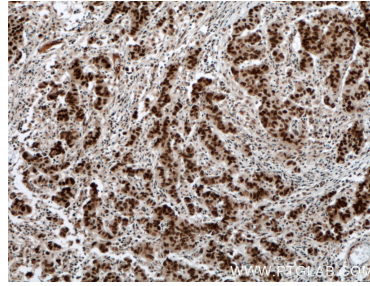
W: ptgcn.com

This product is exclusively available under Proteintech Group brand and is not available to purchase from any other manufacturer.

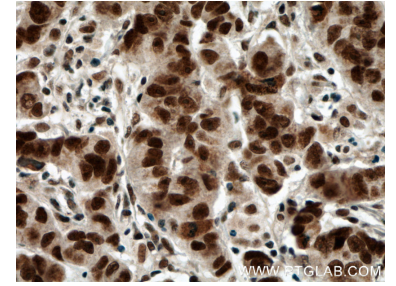
Selected Validation Data



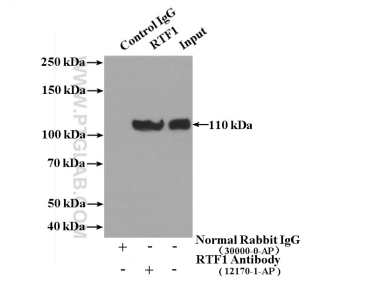
MCF-7 cells were subjected to SDS PAGE followed by western blot with 12170-1-AP (RTF1 antibody) at dilution of 1:1500 incubated at room temperature for 1.5 hours. This data was developed using the same antibody clone with 12170-1-PBS in a different storage buffer formulation.



Immunohistochemical analysis of paraffin-embedded human prostate cancer tissue slide using 12170-1-AP (RTF1 antibody) at dilution of 1:200 (under 10x lens. Heat mediated antigen retrieval with Tris-EDTA buffer (pH 9.0). This data was developed using the same antibody clone with 12170-1-PBS in a different storage buffer formulation.



Immunohistochemical analysis of paraffin-embedded human prostate cancer tissue slide using 12170-1-AP (RTF1 antibody) at dilution of 1:200 (under 40x lens. Heat mediated antigen retrieval with Tris-EDTA buffer (pH 9.0). This data was developed using the same antibody clone with 12170-1-PBS in a different storage buffer formulation.



IP result of anti-RTF1 (IP:12170-1-AP, 4ug; Detection:12170-1-AP 1:500) with HeLa cells lysate 2400ug. This data was developed using the same antibody clone with 12170-1-PBS in a different storage buffer formulation.