

For Research Use Only

CHFR Polyclonal antibody

Catalog Number: 12169-1-AP

Featured Product

6 Publications



Basic Information

Catalog Number:

12169-1-AP

Size:

500 µg/ml

Source:

Rabbit

Isotype:

IgG

Immunogen Catalog Number:

AG2811

GenBank Accession Number:

BC012072

GeneID (NCBI):

55743

UNIPROT ID:

Q96EP1

Full Name:

checkpoint with forkhead and ring finger domains

Calculated MW:

664 aa, 73 kDa

Observed MW:

70-85 kDa

Purification Method:

Antigen affinity purification

Recommended Dilutions:

WB 1:500-1:2000

IHC 1:20-1:200

Applications

Tested Applications:

IHC, WB, ELISA

Cited Applications:

WB, IHC

Species Specificity:

human, mouse

Cited Species:

human, mouse

Note-IHC: suggested antigen retrieval with TE buffer pH 9.0; (*) Alternatively, antigen retrieval may be performed with citrate buffer pH 6.0

Positive Controls:

WB: HepG2 cells, multi-cells/tissue

IHC: human endometrial cancer tissue, human lung cancer tissue

Background Information

The Checkpoint with forkhead and RING finger domains protein(CHFR) is a checkpoint protein that reportedly initiates a cell cycle delay in response to microtubule stress during prophase in mitosis and it has been hypothesized to be a tumor suppressor with a potential role as a biomarker for chemotherapeutic response to Taxol(PMID:17596595). It belongs to the CHFR family. Endogenous Chfr is ubiquitinated and phosphorylated in an MPF-dependent manner in mitotic Xenopus egg extracts(PMID:18504434). It has 5 isoforms produced by alternative splicing.

Notable Publications

Author	Pubmed ID	Journal	Application
Xiangling Chen	34539751	Front Genet	WB
Yuan Li	31812083	Transl Oncol	WB
Guobin Jiang	33880594	Mol Med Rep	WB

Storage

Storage:

Store at -20°C. Stable for one year after shipment.

Storage Buffer:

PBS with 0.02% sodium azide and 50% glycerol pH 7.3.

Aliquoting is unnecessary for -20°C storage

For technical support and original validation data for this product please contact:

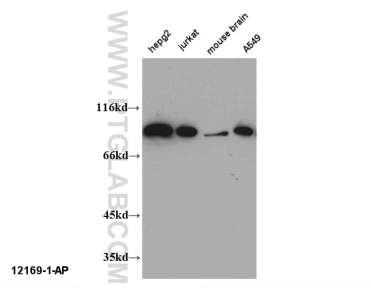
T: 4006900926

E: Proteintech-CN@ptglab.com

W: ptgcn.com

This product is exclusively available under Proteintech Group brand and is not available to purchase from any other manufacturer.

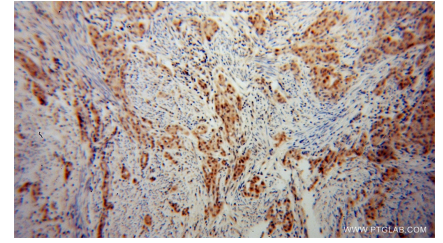
Selected Validation Data



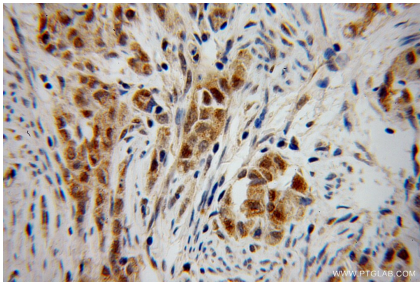
WB result of 12169-1-AP (CHFR antibody).



HepG2 cells were subjected to SDS PAGE followed by western blot with 12169-1-AP (CHFR antibody) at dilution of 1:1000 incubated at room temperature for 1.5 hours.



Immunohistochemical analysis of paraffin-embedded human endometrial cancer using 12169-1-AP (CHFR antibody) at dilution of 1:100 (under 10x lens).



Immunohistochemical analysis of paraffin-embedded human endometrial cancer using 12169-1-AP (CHFR antibody) at dilution of 1:100 (under 40x lens).