

For Research Use Only

GOPC Polyclonal antibody

Catalog Number: 12163-1-AP

4 Publications



Basic Information

Catalog Number:

12163-1-AP

Size:

450 µg/ml

Source:

Rabbit

Isotype:

IgG

Immunogen Catalog Number:

AG2804

GenBank Accession Number:

BC009553

GeneID (NCBI):

57120

UNIPROT ID:

Q9HD26

Full Name:

golgi associated PDZ and coiled-coil motif containing

Calculated MW:

454 aa, 50 kDa

Observed MW:

50-55 kDa

Purification Method:

Antigen affinity purification

Recommended Dilutions:

WB 1:500-1:2000

IHC 1:20-1:200

IF/ICC 1:50-1:500

Applications

Tested Applications:

WB, IHC, IF/ICC, ELISA

Cited Applications:

WB, IF

Species Specificity:

human, mouse, rat

Cited Species:

human, mouse

Note-IHC: suggested antigen retrieval with TE buffer pH 9.0; (*) Alternatively, antigen retrieval may be performed with citrate buffer pH 6.0

Positive Controls:

WB : HepG2 cells, PC-3 cells, mouse colon

IHC : human pancreas cancer tissue,

IF/ICC : HEK-293T cells, HEK-293 cells

Background Information

GOPC (FIG/PIST/CAL) is a PDZ-domain scaffolding protein that regulates the trafficking of many integral membrane proteins, including cell surface receptors, ion channels and adhesion molecules. GOPC localizes to the trans-Golgi network (TGN) but not to the cis- or trans-Golgi cisternae, thus anti-GOPC can be used to label the TGN structure.

Notable Publications

Author	Pubmed ID	Journal	Application
Lixiao Zhou	35381522	Environ Int	WB
Johannes Kopp	39680136	Cell Mol Life Sci	IF
Jing Wang	39269275	Elife	IF

Storage

Storage:

Store at -20°C. Stable for one year after shipment.

Storage Buffer:

PBS with 0.02% sodium azide and 50% glycerol pH 7.3.

Aliquoting is unnecessary for -20°C storage

For technical support and original validation data for this product please contact:

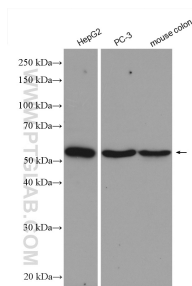
T: 4006900926

E: Proteintech-CN@ptglab.com

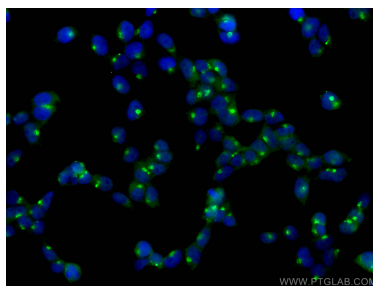
W: ptgcn.com

This product is exclusively available under Proteintech Group brand and is not available to purchase from any other manufacturer.

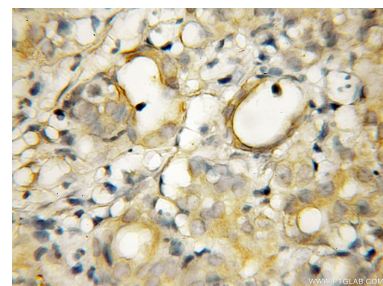
Selected Validation Data



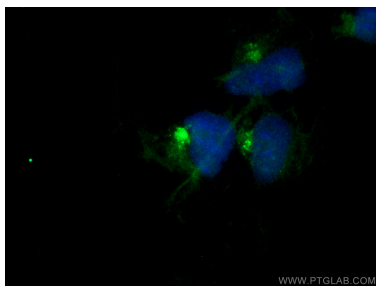
Various lysates were subjected to SDS PAGE followed by western blot with 12163-1-AP (GOPC antibody) at dilution of 1:1000 incubated at room temperature for 1.5 hours.



Immunofluorescent analysis of (4% PFA) fixed HEK-293T cells using GOPC antibody (12163-1-AP) at dilution of 1:200 and CoraLite®488-Conjugated Goat Anti-Rabbit IgG(H+L).



Immunohistochemical analysis of paraffin-embedded human pancreas cancer using 12163-1-AP (GOPC antibody) at dilution of 1:50 (under 10x lens).



Immunofluorescent analysis of (4% PFA) fixed HEK-293 cells using GOPC antibody (12163-1-AP) at dilution of 1:400 and CoraLite®488-Conjugated Goat Anti-Rabbit IgG(H+L).