

For Research Use Only

CCBL1/KAT1 Polyclonal antibody

Catalog Number: 12156-1-AP

12 Publications



Basic Information

Catalog Number:

12156-1-AP

Size:

400 µg/ml

Source:

Rabbit

Isotype:

IgG

Immunogen Catalog Number:

AG2828

GenBank Accession Number:

BC013069

GeneID (NCBI):

883

UNIPROT ID:

Q16773

Full Name:

cysteine conjugate-beta lyase,
cytoplasmic

Calculated MW:

48 kDa

Observed MW:

48-50 kDa

Purification Method:

Antigen affinity purification

Recommended Dilutions:

WB 1:500-1:1000

IF/ICC 1:50-1:500

Applications

Tested Applications:

IF/ICC, WB, ELISA

Cited Applications:

WB, IHC

Species Specificity:

human, mouse, rat

Cited Species:

human, mouse, rat

Positive Controls:

WB : mouse kidney tissue, HeLa cells, L02 cells

IF/ICC : HeLa cells,

Background Information

CCBL1 encodes kynurenine aminotransferase 1 (KAT1), a key enzyme involved in kynurenine pathway. CCBL1 catalyzes the production of kynurenic acid, a powerful endogenous excitatory amino acid receptor antagonist that is widely regarded as the potent neuroprotective agent.

Notable Publications

Author	Pubmed ID	Journal	Application
Leandro Z Agudelo	25259918	Cell	WB
Chongye Fang	33790369	Sci Rep	WB
Maja Schlittler	27030575	Am J Physiol Cell Physiol	

Storage

Storage:

Store at -20°C. Stable for one year after shipment.

Storage Buffer:

PBS with 0.02% sodium azide and 50% glycerol pH 7.3.

Aliquoting is unnecessary for -20°C storage

For technical support and original validation data for this product please contact:

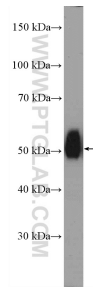
T: 4006900926

E: Proteintech-CN@ptglab.com

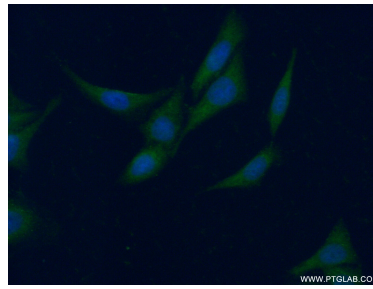
W: ptgcn.com

This product is exclusively available under Proteintech Group brand and is not available to purchase from any other manufacturer.

Selected Validation Data



mouse kidney tissue were subjected to SDS PAGE followed by western blot with 12156-1-AP (CCBL1/KAT1 antibody at dilution of 1:600 incubated at room temperature for 1.5 hours.



Immunofluorescent analysis of (-20°C Ethanol) fixed HeLa cells using 12156-1-AP (CCBL1/KAT1 antibody) at dilution of 1:50 and Alexa Fluor 488-conjugated Goat Anti-Rabbit IgG(H+L).