

For Research Use Only

PRKCSH Polyclonal antibody

Catalog Number: 12148-1-AP

Featured Product

9 Publications



Basic Information

Catalog Number:

12148-1-AP

Size:

1200 ug/ml

Source:

Rabbit

Isotype:

IgG

Immunogen Catalog Number:

AG2796

GenBank Accession Number:

BC013586

GeneID (NCBI):

5589

UNIPROT ID:

P14314

Full Name:

protein kinase C substrate 80K-H

Calculated MW:

80 kDa

Observed MW:

80 kDa

Purification Method:

Antigen affinity purification

Recommended Dilutions:

WB 1:2000-1:8000

IP 0.5-4.0 ug for 1.0-3.0 mg of total protein lysate

IHC 1:200-1:1600

IF/ICC 1:50-1:500

Applications

Tested Applications:

WB, IHC, IF/ICC, IP, ELISA

Cited Applications:

WB, IHC, IF

Species Specificity:

human, mouse, rat

Cited Species:

human, mouse, rat

Note-IHC: suggested antigen retrieval with TE buffer pH 9.0; (*) Alternatively, antigen retrieval may be performed with citrate buffer pH 6.0

Positive Controls:

WB: A431 cells, mouse liver tissue, rat liver tissue, HeLa cells, Jurkat cells

IP: HeLa cells,

IHC: human kidney tissue, human normal colon

IF/ICC: HeLa cells,

Background Information

PRKCSH encodes the beta-subunit of glucosidase II, an N-linked glycan-processing enzyme in the endoplasmic reticulum (ER). This protein is an acidic phospho-protein known to be a substrate for protein kinase C. Defects in PRKCSH are a cause of an autosomal dominant polycystic liver disease (PCLD). Glucosidase II is an ER-localized enzyme that contains α and β subunits (Glucosidase II α and Glucosidase II β) which form a defined heterodimeric complex.

Notable Publications

Author	Pubmed ID	Journal	Application
Ling Leng	35679865	Cell Rep	IHC
Birong Liang	35598104	Exp Physiol	IHC
Gu-Choul Shin	31320625	Nat Commun	WB

Storage

Storage:

Store at -20°C. Stable for one year after shipment.

Storage Buffer:

PBS with 0.02% sodium azide and 50% glycerol pH 7.3.

Aliquoting is unnecessary for -20°C storage

For technical support and original validation data for this product please contact:

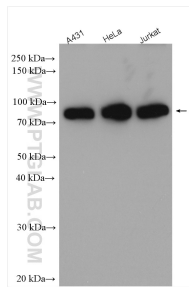
T: 4006900926

E: Proteintech-CN@ptglab.com

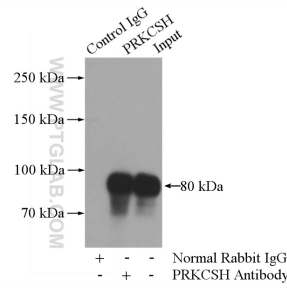
W: ptgcn.com

This product is exclusively available under Proteintech Group brand and is not available to purchase from any other manufacturer.

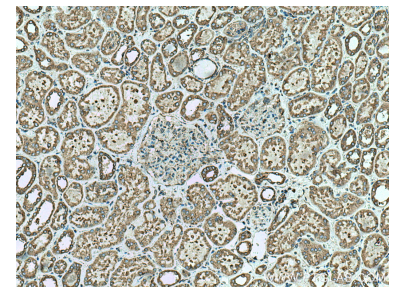
Selected Validation Data



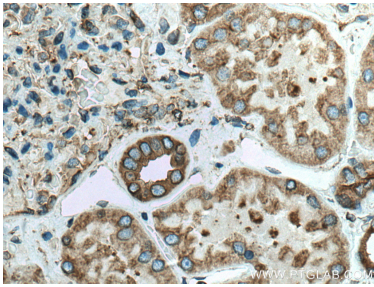
Various lysates were subjected to SDS PAGE followed by western blot with 12148-1-AP (PRKCSH antibody) at dilution of 1:4000 incubated at room temperature for 1.5 hours.



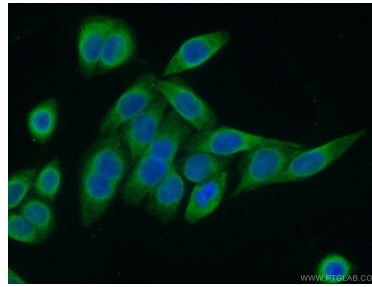
IP result of anti-PRKCSH (IP:12148-1-AP, 4ug; Detection:12148-1-AP 1:1000) with HeLa cells lysate 2000ug.



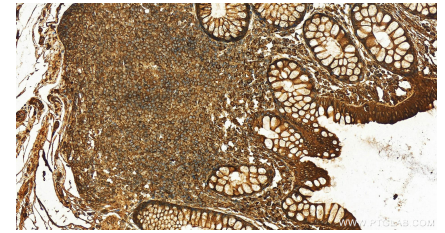
Immunohistochemical analysis of paraffin-embedded human kidney tissue slide using 12148-1-AP (PRKCSH antibody) at dilution of 1:200 (under 10x lens). Heat mediated antigen retrieval with Tris-EDTA buffer (pH 9.0).



Immunohistochemical analysis of paraffin-embedded human kidney tissue slide using 12148-1-AP (PRKCSH antibody) at dilution of 1:200 (under 40x lens). Heat mediated antigen retrieval with Tris-EDTA buffer (pH 9.0).



Immunofluorescent analysis of (10% Formaldehyde) fixed HeLa cells using 12148-1-AP (PRKCSH antibody) at dilution of 1:50 and Alexa Fluor 488-conjugated Goat Anti-Rabbit IgG(H+L).



Immunohistochemical analysis of paraffin-embedded human normal colon slide using 12148-1-AP (PRKCSH antibody) at dilution of 1:800 (under 20x lens). Heat mediated antigen retrieval with Tris-EDTA buffer (pH 9.0).