

For Research Use Only

CIN85 Polyclonal antibody

Catalog Number: 12132-1-AP

Featured Product

3 Publications



Basic Information

Catalog Number:

12132-1-AP

Size:

700 ug/ml

Source:

Rabbit

Isotype:

IgG

Immunogen Catalog Number:

AG2777

GenBank Accession Number:

BC015806

GeneID (NCBI):

30011

UNIPROT ID:

Q96B97

Full Name:

SH3-domain kinase binding protein 1

Calculated MW:

665 aa, 73 kDa

Observed MW:

85 kDa

Purification Method:

Antigen affinity purification

Recommended Dilutions:

WB 1:2000-1:10000

IHC 1:50-1:500

Applications

Tested Applications:

WB, IHC, ELISA

Cited Applications:

WB, IHC, IF

Species Specificity:

human, mouse

Cited Species:

human

Positive Controls:

WB : Raji cells, fetal human brain tissue, Ramos cells, Jurkat cells, THP-1 cells, NIH/3T3 cells

IHC : human colon cancer tissue, human ovary cancer tissue

Note-IHC: suggested antigen retrieval with TE buffer pH 9.0; (*) Alternatively, antigen retrieval may be performed with citrate buffer pH 6.0

Background Information

CIN85 is identified as a Cbl-interacting protein of 85 kDa and belongs to adaptor/scaffold proteins. It composed of three N-terminal SH3 domains followed by a proline-rich region and a C-terminal coiled-coil region. In association with c-Cbl (Casitas B-lineage lymphoma), an E3 ubiquitin ligase. As an adaptor protein, CIN85 is involved in Cbl-dependent EGFR internalization, intracellular receptor trafficking, sorting and degradation. Moreover, through the SH3 domains and the proline-rich region, CIN85 is implicated in many protein-protein interactions and it is found to play important roles in other processes such as apoptosis, rearrangement of actin cytoskeleton, cell adhesion, immunological synapse, cell migration and invasion.

Notable Publications

| Author | Pubmed ID | Journal | Application |
|-------------------|-----------|---------------------|-------------|
| Ma Yaxi Y | 20882291 | Arch Gynecol Obstet | IHC |
| Ihor Yakymovych | 26169354 | J Cell Biol | WB, IF |
| Yoon Hye-Young HY | 21275903 | Biol Cell | WB |

Storage

Storage:

Store at -20°C. Stable for one year after shipment.

Storage Buffer:

PBS with 0.02% sodium azide and 50% glycerol pH 7.3.

Aliquoting is unnecessary for -20°C storage

For technical support and original validation data for this product please contact:

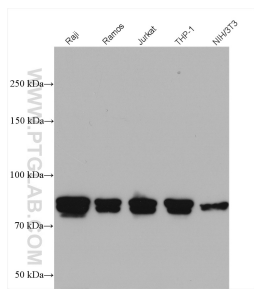
T: 4006900926

E: Proteintech-CN@ptglab.com

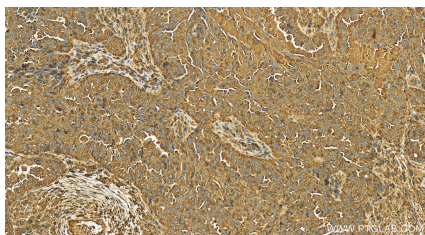
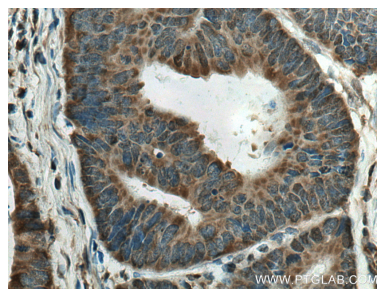
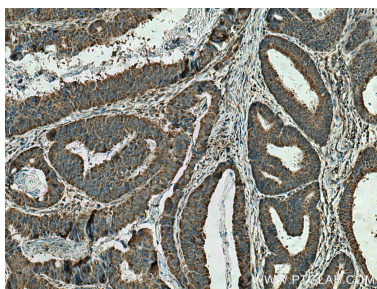
W: ptgcn.com

This product is exclusively available under Proteintech Group brand and is not available to purchase from any other manufacturer.

Selected Validation Data



Various lysates were subjected to SDS PAGE followed by western blot with 12132-1-AP (CIN85 antibody) at dilution of 1:5000 incubated at room temperature for 1.5 hours.



Immunohistochemical analysis of paraffin-embedded human ovary cancer tissue slide using 12132-1-AP (CIN85 antibody) at dilution of 1:200 (under 20x lens). Heat mediated antigen retrieval with Tris-EDTA buffer (pH 9.0).