

For Research Use Only

# SAP130 Polyclonal antibody, PBS Only

Catalog Number:12130-1-PBS



## Basic Information

|  |   |  |
|--|---|--|
| <b>Catalog Number:</b><br>12130-1-PBS      | <b>GenBank Accession Number:</b><br>BC017453          | <b>Purification Method:</b><br>Antigen affinity purification |
| <b>Size:</b><br>1 mg/ml                    | <b>GeneID (NCBI):</b><br>79595                        |  |
| <b>Source:</b><br>Rabbit                   | <b>UNIPROT ID:</b><br>Q9H0E3                          |  |
| <b>Isotype:</b><br>IgG                     | <b>Full Name:</b><br>Sin3A-associated protein, 130kDa |  |
| <b>Immunogen Catalog Number:</b><br>AG2774 | <b>Calculated MW:</b><br>110 kDa                      |  |
|  | <b>Observed MW:</b><br>130 kDa                        |  |

## Applications

**Tested Applications:**  
WB, IHC, IF/ICC, IP, Indirect ELISA

**Species Specificity:**  
human

## Background Information

SF3b is a U2 snRNP-associated protein complex essential for spliceosome assembly. SF3b contains the spliceosomal proteins SAP 49, SAP 130, SAP 145, and SAP 155. SAP 130, SAP 145, and SAP 155 are present in a protein complex and associate with one another. While SAP 155 and SAP 130 interact with each other (directly or indirectly) within this complex, SAP 49 and SAP 145 are known to interact directly with each other. Unexpectedly, the SAP 49-SAP 145 protein-protein interaction requires the amino-terminus of SAP 49, which contains two RNA-recognition motifs. The observation that SAP 49 and SAP 145 interact directly with both U2 snRNP and the pre-mRNA suggests that this protein complex plays a role in tethering U2 snRNP to the branch site.

## Storage

**Storage:**  
Store at -80°C.  
**The product is shipped with ice packs. Upon receipt, store it immediately at -80°C**

**Storage Buffer:**  
PBS Only

For technical support and original validation data for this product please contact:

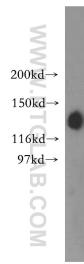
T: 4006900926

E: [Proteintech-CN@ptglab.com](mailto:Proteintech-CN@ptglab.com)

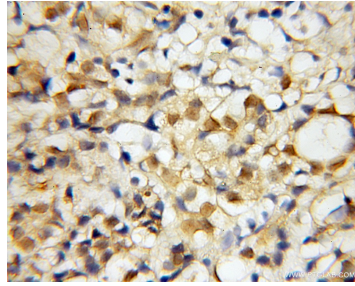
W: [ptgcn.com](http://ptgcn.com)

**This product is exclusively available under Proteintech Group brand and is not available to purchase from any other manufacturer.**

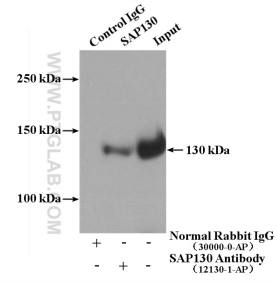
## Selected Validation Data



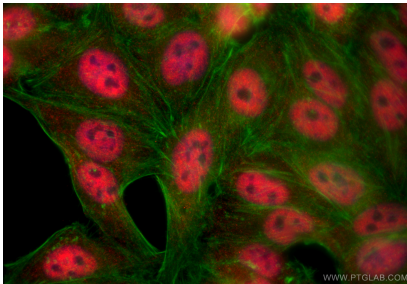
HEK-293 cells were subjected to SDS PAGE followed by western blot with 12130-1-AP (SAP130 antibody) at dilution of 1:400 incubated at room temperature for 1.5 hours. This data was developed using the same antibody clone with 12130-1-PBS in a different storage buffer formulation.



Immunohistochemical analysis of paraffin-embedded human pancreas cancer using 12130-1-AP (SAP130 antibody) at dilution of 1:50 (under 10x lens). This data was developed using the same antibody clone with 12130-1-PBS in a different storage buffer formulation.



IP result of anti-SAP130 (IP:12130-1-AP, 4ug; Detection:12130-1-AP 1:600) with HepG2 cells lysate 1000ug. This data was developed using the same antibody clone with 12130-1-PBS in a different storage buffer formulation.



Immunofluorescent analysis of (4% PFA) fixed HepG2 cells using SAP130 antibody (12130-1-AP) at dilution of 1:400 and CoraLite®594-Conjugated Goat Anti-Rabbit IgG(H+L) (SA00013-4), CL488-phalloidin (green). This data was developed using the same antibody clone with 12130-1-PBS in a different storage buffer formulation.