

For Research Use Only

# SYTL4 Polyclonal antibody

Catalog Number: 12128-1-AP

Featured Product

6 Publications



## Basic Information

### Catalog Number:

12128-1-AP

### Size:

700 µg/ml

### Source:

Rabbit

### Isotype:

IgG

### Immunogen Catalog Number:

AG2772

### GenBank Accession Number:

BC014913

### GeneID (NCBI):

94121

### UNIPROT ID:

Q96C24

### Full Name:

synaptotagmin-like 4

### Calculated MW:

671 aa, 76 kDa

### Observed MW:

76 kDa

### Purification Method:

Antigen affinity purification

### Recommended Dilutions:

WB 1:500-1:3000

IP 0.5-4.0 µg for 1.0-3.0 mg of total protein lysate

IHC 1:50-1:500

## Applications

### Tested Applications:

WB, IP, IHC, ELISA

### Cited Applications:

WB, IF, IP

### Species Specificity:

human, mouse

### Cited Species:

human, rat

**Note-IHC: suggested antigen retrieval with TE buffer pH 9.0; (\*) Alternatively, antigen retrieval may be performed with citrate buffer pH 6.0**

### Positive Controls:

WB : HeLa cells, mouse pancreas tissue, U2OS cells

IP : HEK-293 cells,

IHC : human breast cancer tissue,

## Background Information

SYTL4, also known as SLP4 or granuphilin, is a member of the synaptotagmin-like protein (Slp) family. Members of this family are characterized by presence of an N-terminal Slp homology domain (SHD), which functions as a Rab27-binding domain, and C-terminal tandem C2 domains, putative Ca(2+)-binding motifs. SYTL4 is specifically expressed on dense-core granules in certain neuroendocrine cells and negatively controls dense-core vesicle exocytosis through specific interaction with Rab27A. (PMID: 16481396; 16473610)

## Notable Publications

Author	Pubmed ID	Journal	Application
Akiko Takahashi	28508895	Nat Commun	WB
Frédéric Adam	29519941	Arterioscler Thromb Vasc Biol	WB,IP
Xi-Yu Liu	33042263	Theranostics	WB,IF

## Storage

### Storage:

Store at -20°C. Stable for one year after shipment.

### Storage Buffer:

PBS with 0.02% sodium azide and 50% glycerol pH 7.3.

Aliquoting is unnecessary for -20°C storage

For technical support and original validation data for this product please contact:

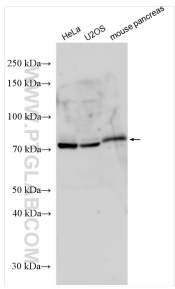
T: 4006900926

E: [Proteintech-CN@ptglab.com](mailto:Proteintech-CN@ptglab.com)

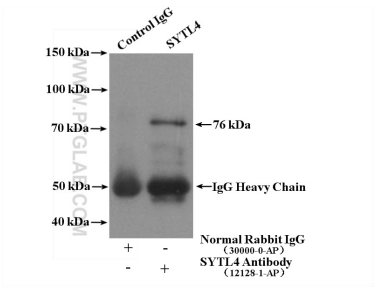
W: [ptgcn.com](http://ptgcn.com)

This product is exclusively available under Proteintech Group brand and is not available to purchase from any other manufacturer.

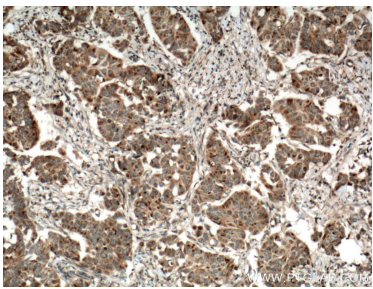
Selected Validation Data



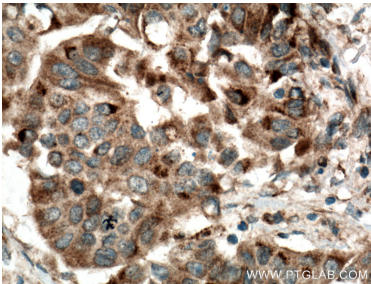
Various lysates were subjected to SDS PAGE followed by western blot with 12128-1-AP (SYTL4 antibody) at dilution of 1:1500 incubated at room temperature for 1.5 hours.



IP result of anti-SYTL4 (IP:12128-1-AP, 4ug; Detection:12128-1-AP 1:300) with HEK-293 cells lysate 1600 ug.



Immunohistochemical analysis of paraffin-embedded human breast cancer tissue slide using 12128-1-AP (SYTL4 antibody) at dilution of 1:200 (under 10x lens).



Immunohistochemical analysis of paraffin-embedded human breast cancer tissue slide using 12128-1-AP (SYTL4 antibody) at dilution of 1:200 (under 40x lens).