

For Research Use Only

CHRAC1 Polyclonal antibody

Catalog Number: 12126-2-AP



Basic Information

Catalog Number: 12126-2-AP	GenBank Accession Number: BC015891	Purification Method: Antigen affinity purification
Size: 700 µg/ml	GeneID (NCBI): 54108	Recommended Dilutions: WB 1:500-1:1000 IHC 1:20-1:200
Source: Rabbit	UNIPROT ID: Q9NRG0	
Isotype: IgG	Full Name: chromatin accessibility complex 1	
Immunogen Catalog Number: AG2770	Calculated MW: 131 aa, 15 kDa	
	Observed MW: 15 kDa	

Applications

Tested Applications:

IHC, WB, ELISA

Species Specificity:

human, mouse, rat

Note-IHC: suggested antigen retrieval with TE buffer pH 9.0; (*) Alternatively, antigen retrieval may be performed with citrate buffer pH 6.0

Positive Controls:

WB : HEK-293 cells, L02 cells, HeLa cells, HepG2 cells, K-562 cells

IHC : human pancreas cancer tissue,

Background Information

Storage

Storage:

Store at -20°C. Stable for one year after shipment.

Storage Buffer:

PBS with 0.02% sodium azide and 50% glycerol pH 7.3.

Aliquoting is unnecessary for -20°C storage

For technical support and original validation data for this product please contact:

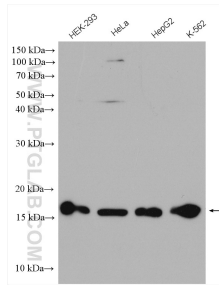
T: 4006900926

E: Proteintech-CN@ptglab.com

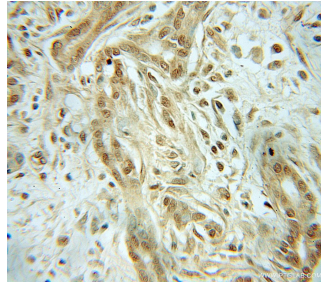
W: ptgcn.com

This product is exclusively available under Proteintech Group brand and is not available to purchase from any other manufacturer.

Selected Validation Data



Various lysates were subjected to SDS PAGE followed by western blot with 12126-2-AP (CHRA1 antibody) at dilution of 1:800 incubated at room temperature for 1.5 hours.



Immunohistochemical analysis of paraffin-embedded human pancreas cancer using 12126-2-AP (CHRA1 antibody) at dilution of 1:50 (under 10x lens).