

For Research Use Only

RAB22A Polyclonal antibody

Catalog Number: 12125-1-AP

Featured Product

24 Publications



Basic Information

Catalog Number:

12125-1-AP

Size:

300 µg/ml

Source:

Rabbit

Isotype:

IgG

Immunogen Catalog Number:

AG2769

GenBank Accession Number:

BC015710

GeneID (NCBI):

57403

UNIPROT ID:

Q9UL26

Full Name:

RAB22A, member RAS oncogene family

Calculated MW:

194 aa, 22 kDa

Observed MW:

22 kDa

Purification Method:

Antigen affinity purification

Recommended Dilutions:

WB 1:500-1:1000

IP 0.5-4.0 µg for 1.0-3.0 mg of total protein lysate

IHC 1:50-1:500

Applications

Tested Applications:

WB, IP, IHC, ELISA

Cited Applications:

WB, IHC, IF, IP

Species Specificity:

human

Cited Species:

human, mouse, canine, hamster

Note-IHC: suggested antigen retrieval with TE buffer pH 9.0; (*) Alternatively, antigen retrieval may be performed with citrate buffer pH 6.0

Positive Controls:

WB : COLO 320 cells, Jurkat cells, BxPC-3 cells, A375 cells

IP : COLO 320 cells,

IHC : human gliomas tissue,

Background Information

RAB22A is a small GTPase that is expressed ubiquitously in mammalian tissues. It localizes in the MHCI-containing recycling endosomal tubules and functions in endocytic pathway. RAB22A may regulate the dynamic interactions of endosomal compartments and it may be involved in the communication between the biosynthetic and early endocytic pathways. It shares 81% identity with RAB31.

Notable Publications

Author	Pubmed ID	Journal	Application
Dan Li	36231028	Cells	IHC, WB
Yuan Yin	28928161	Clin Cancer Res	WB, IHC
Margue Christiane C	24039954	PLoS One	WB

Storage

Storage:

Store at -20°C. Stable for one year after shipment.

Storage Buffer:

PBS with 0.02% sodium azide and 50% glycerol pH 7.3.

Aliquoting is unnecessary for -20°C storage

For technical support and original validation data for this product please contact:

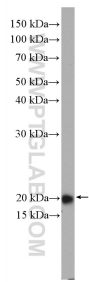
T: 4006900926

E: Proteintech-CN@ptglab.com

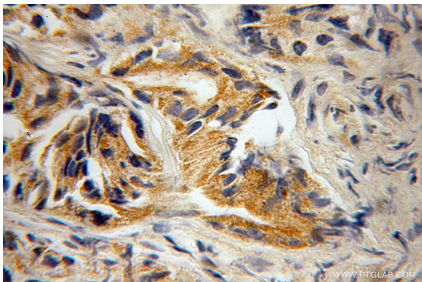
W: ptgcn.com

This product is exclusively available under Proteintech Group brand and is not available to purchase from any other manufacturer.

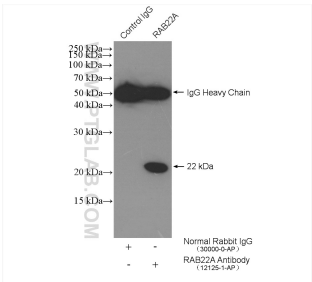
Selected Validation Data



COLO 320 cells were subjected to SDS PAGE followed by western blot with 12125-1-AP (RAB22A antibody) at dilution of 1:600 incubated at room temperature for 1.5 hours.



Immunohistochemical analysis of paraffin-embedded human gliomas using 12125-1-AP (RAB22A antibody) at dilution of 1:100 (under 10x lens).



IP result of anti-RAB22A (IP:12125-1-AP, 4ug; Detection:12125-1-AP 1:300) with COLO 320 cells lysate 2560 ug.