

For Research Use Only

LRDD Polyclonal antibody

Catalog Number: 12119-1-AP

2 Publications



Basic Information

Catalog Number:

12119-1-AP

Size:

500 ug/ml

Source:

Rabbit

Isotype:

IgG

Immunogen Catalog Number:

AG2761

GenBank Accession Number:

BC014904

GeneID (NCBI):

55367

UNIPROT ID:

Q9HB75

Full Name:

leucine-rich repeats and death domain containing

Calculated MW:

893 aa, 98 kDa

Observed MW:

55 kDa

Purification Method:

Antigen affinity purification

Recommended Dilutions:

WB 1:500-1:1000

IP 0.5-4.0 ug for 1.0-3.0 mg of total protein lysate

IHC 1:250-1:1000

IF/ICC 1:200-1:800

Applications

Tested Applications:

WB, IHC, IF/ICC, IP, ELISA

Cited Applications:

WB

Species Specificity:

human, mouse, rat

Cited Species:

mouse

Note-IHC: suggested antigen retrieval with TE buffer pH 9.0; (*) Alternatively, antigen retrieval may be performed with citrate buffer pH 6.0

Positive Controls:

WB : HEK-293 cells, HeLa cells, L02 cells

IP : L02 cells,

IHC : human lung tissue, human pancreas tissue, human liver tissue, human lung cancer tissue

IF/ICC : HEK-293 cells, HeLa cells

Background Information

P53-induced protein with a death domain (PIDD/LRDD) is a component of the PIDDosome. PIDD contains 910 residues with 7 leucine rich repeats (LRRs), 2 ZU-5 domains and a C-terminal death domain (DD). PIDD can be cleaved into shorter fragments generating a PIDD-N fragment of 48 kD (residues 1-446), a PIDD-C fragment of 51 kD (residues 447-910) and a PIDD-CC fragment of 37 kD (residues 589-910). Auto-cleavage of PIDD determines the downstream signaling events. The PIDD-C fragment mediates activation of NF- κ B via the recruitment of RIP1 and NEMO, while PIDD-CC causes caspase-2 activation, which leads to apoptosis.

Notable Publications

Author	Pubmed ID	Journal	Application
Wei-Na Chai	34100452	Neural Regen Res	WB
Lei Yang	38866102	Exp Neurol	WB

Storage

Storage:

Store at -20°C. Stable for one year after shipment.

Storage Buffer:

PBS with 0.02% sodium azide and 50% glycerol pH 7.3.

Aliquoting is unnecessary for -20°C storage

For technical support and original validation data for this product please contact:

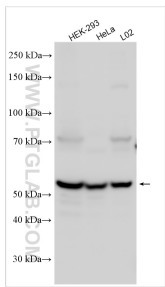
T: 4006900926

E: Proteintech-CN@ptglab.com

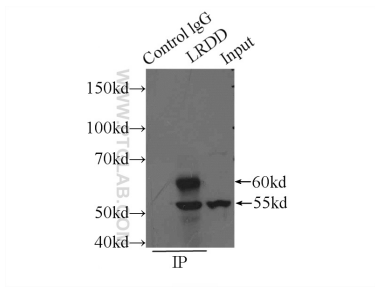
W: ptgcn.com

This product is exclusively available under Proteintech Group brand and is not available to purchase from any other manufacturer.

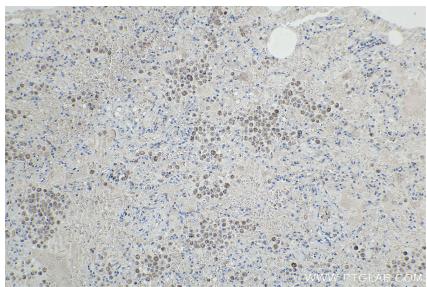
Selected Validation Data



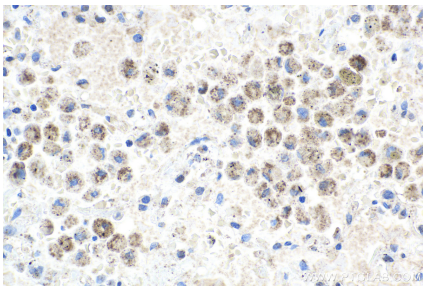
Various lysates were subjected to SDS PAGE followed by western blot with 12119-1-AP (LRDD antibody) at dilution of 1:600 incubated at room temperature for 1.5 hours.



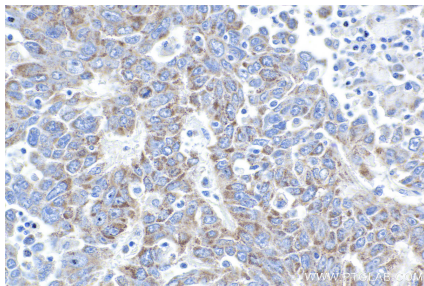
IP result of anti-LRDD (IP:12119-1-AP, 4ug; Detection:12119-1-AP 1:500) with L02 cells lysate 2800ug.



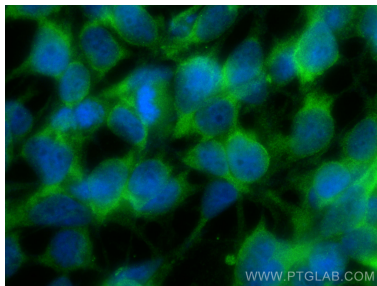
Immunohistochemical analysis of paraffin-embedded human lung tissue slide using 12119-1-AP (LRDD antibody) at dilution of 1:500 (under 10x lens). Heat mediated antigen retrieval with Tris-EDTA buffer (pH 9.0).



Immunohistochemical analysis of paraffin-embedded human lung tissue slide using 12119-1-AP (LRDD antibody) at dilution of 1:500 (under 40x lens). Heat mediated antigen retrieval with Tris-EDTA buffer (pH 9.0).



Immunohistochemical analysis of paraffin-embedded human lung cancer tissue slide using 12119-1-AP (LRDD antibody) at dilution of 1:500 (under 40x lens). Heat mediated antigen retrieval with Tris-EDTA buffer (pH 9.0).



Immunofluorescent analysis of (-20°C Ethanol) fixed HEK-293 cells using LRDD antibody (12119-1-AP) at dilution of 1:400 and CoraLite®488-Conjugated AffiniPure Goat Anti-Rabbit IgG(H+L) (SA00013-2).