

MCCC2 Polyclonal antibody

Catalog Number: 12117-1-AP

Featured Product

4 Publications

Basic Information

Catalog Number:

12117-1-AP

Size:

650 µg/ml

Source:

Rabbit

Isotype:

IgG

Immunogen Catalog Number:

AG2767

GenBank Accession Number:

BC014897

GeneID (NCBI):

64087

UNIPROT ID:

Q9HCC0

Full Name:

methylcrotonoyl-Coenzyme A
carboxylase 2 (beta)

Calculated MW:

563 aa, 61 kDa

Observed MW:

61 kDa

Purification Method:

Antigen affinity purification

Recommended Dilutions:

WB 1:500-1:1000

IP 0.5-4.0 µg for 1.0-3.0 mg of total
protein lysate

IHC 1:20-1:200

Applications

Tested Applications:

IHC, IP, WB, ELISA

Cited Applications:

WB, IF, IHC, CoIP

Species Specificity:

human, mouse, rat

Cited Species:

human, mouse

**Note-IHC: suggested antigen retrieval with
TE buffer pH 9.0; (*) Alternatively, antigen
retrieval may be performed with citrate
buffer pH 6.0**

Positive Controls:

WB : human liver tissue,

IP : mouse kidney tissue,

IHC : human pancreas cancer tissue,

Background Information

MCCC2 (Methylcrotonoyl-CoA carboxylase beta chain, mitochondrial) is also named as MCCB and belongs to the AccD/PCCB family. The putative 563-amino acid polypeptide has a calculated molecular mass of 61 kD and contains an N-terminal mitochondrial targeting sequence (PMID:11181649). It catalyzes carboxylation of 3-methylcrotonyl CoA to form 3-methylglutaconyl-CoA and is probably a dodecamer composed of six biotin-containing alpha subunits and six beta subunits. Defects in MCCC2 are the cause of methylcrotonoyl-CoA carboxylase 2 deficiency (MCC2D).

Notable Publications

Author	Pubmed ID	Journal	Application
J Dai	26311342	Andrology	WB
Yu-Yan Chen	33407468	Cancer Cell Int	WB
Pang Jun J	19894759	J Proteome Res	WB, IHC

Storage

Storage:

Store at -20°C. Stable for one year after shipment.

Storage Buffer:

PBS with 0.02% sodium azide and 50% glycerol pH 7.3.

Aliquoting is unnecessary for -20°C storage

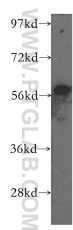
For technical support and original validation data for this product please contact:

T: 4006900926

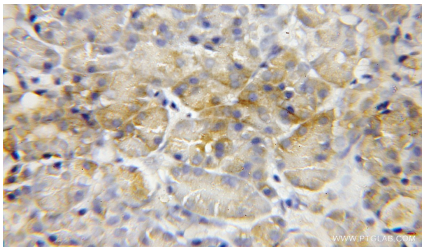
E: Proteintech-CN@ptglab.comW: ptgcn.com

**This product is exclusively available under Proteintech
Group brand and is not available to purchase from any
other manufacturer.**

Selected Validation Data



human liver tissue were subjected to SDS PAGE followed by western blot with 12117-1-AP (MCCC2 antibody) at dilution of 1:400 incubated at room temperature for 1.5 hours.



Immunohistochemical analysis of paraffin-embedded human pancreas cancer using 12117-1-AP (MCCC2 antibody) at dilution of 1:50 (under 10x lens).



IP result of anti-MCCC2 (IP:12117-1-AP, 4ug; Detection:12117-1-AP 1:300) with mouse kidney tissue lysate 4000ug.