

# AP1M1 Polyclonal antibody

Catalog Number: 12112-1-AP

Featured Product

9 Publications

## Basic Information

## Catalog Number:

12112-1-AP

## Size:

200 µg/ml

## Source:

Rabbit

## Isotype:

IgG

## Immunogen Catalog Number:

AG2757

## GenBank Accession Number:

BC017469

## GeneID (NCBI):

8907

## UNIPROT ID:

Q9BX55

## Full Name:

adaptor-related protein complex 1,  
mu 1 subunit

## Calculated MW:

423 aa, 49 kDa

## Observed MW:

49 kDa

## Purification Method:

Antigen affinity purification

## Recommended Dilutions:

WB 1:500-1:1000

IP 0.5-4.0 µg for 1.0-3.0 mg of total  
protein lysate

## Applications

## Tested Applications:

IP, WB, ELISA

## Cited Applications:

WB, IF, CoIP

## Species Specificity:

human, mouse, rat

## Cited Species:

human, mouse, canine

## Positive Controls:

WB : human brain tissue, Hacat cells

IP : SH-SY5Y cells,

## Background Information

AP1M1, also named as CLTNM, Mu-adaptin 1 and Clathrin coat assembly protein AP47, belongs to the adaptor complexes medium subunit family. It is a subunit of clathrin-associated adaptor protein complex 1 that plays a role in protein sorting in the trans-Golgi network (TGN) and endosomes. The AP complexes mediate the recruitment of clathrin to membranes and the recognition of sorting signals within the cytosolic tails of transmembrane cargo molecules.

## Notable Publications

Author	Pubmed ID	Journal	Application
Ying Liu	36261523	Nature	WB
Rajesh Abraham Jacob	28577469	Virology	WB
Saitoh Masao M	23675417	PLoS One	WB

## Storage

## Storage:

Store at -20°C. Stable for one year after shipment.

## Storage Buffer:

PBS with 0.02% sodium azide and 50% glycerol pH 7.3.

Aliquoting is unnecessary for -20°C storage

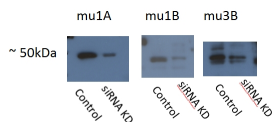
For technical support and original validation data for this product please contact:

T: 4006900926

E: [Proteintech-CN@ptglab.com](mailto:Proteintech-CN@ptglab.com)W: [ptgcn.com](http://ptgcn.com)

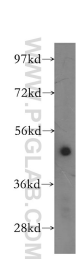
This product is exclusively available under Proteintech Group brand and is not available to purchase from any other manufacturer.

Selected Validation Data

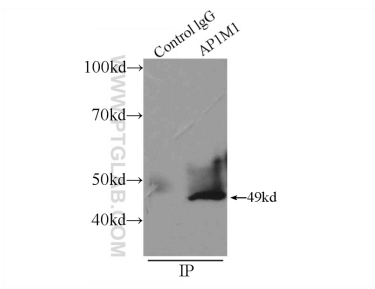


AP1M1 is mu1A: 12112-1-AP,  
AP1M2 is mu1B: 10618-1-AP,  
Ap3M2 is mu3B: 11925-1-AP,  
acceptable bands ~50 kDa showing  
some degree of siRNA  
knockdown

WB result of AP1M1 antibody (12112-1-AP, 1:500)  
with siRNA cell lysate.



human brain tissue were subjected to SDS PAGE  
followed by western blot with 12112-1-AP (AP1M1  
antibody) at dilution of 1:400 incubated at room  
temperature for 1.5 hours.



IP result of anti-AP1M1 (IP:12112-1-AP, 4ug;  
Detection:12112-1-AP 1:500) with SH-SY5Y cells  
lysate 2500ug.