

## BRF2 Polyclonal antibody

Catalog Number: 12056-1-AP

1 Publications

## Basic Information

## Catalog Number:

12056-1-AP

## Size:

550 µg/ml

## Source:

Rabbit

## Isotype:

IgG

## Immunogen Catalog Number:

AG2686

## GenBank Accession Number:

BC010648

## GeneID (NCBI):

55290

## UNIPROT ID:

Q9HAW0

## Full Name:

BRF2, subunit of RNA polymerase III transcription initiation factor, BRF1-like

## Calculated MW:

47 kDa

## Observed MW:

50-60 kDa

## Purification Method:

Antigen affinity purification

## Recommended Dilutions:

WB 1:500-1:1000

## Applications

## Tested Applications:

WB, ELISA

## Cited Applications:

WB

## Species Specificity:

human, mouse, rat

## Cited Species:

human

## Positive Controls:

WB : HT-1080 cells, DU 145 cells

## Background Information

Human cells contain two types of RNA polymerase III transcription factor (TFIIIB), BRF1 and BRF2. BRF2, also named as BRFU, contains one TFIIIB-type zinc finger. It is a general activator of RNA polymerase III transcription. It is a factor exclusively required for RNA polymerase III transcription of genes with promoter elements upstream of the initiation sites. BRF2 is recruited to type 3 promoters such as the human U6 snRNA promoter. It differs from BRF1-TFIIIB in that it contains the TFIIIB-related factor BRF2 instead of BRF1 and its three components do not form a stable complex. This antibody is a rabbit polyclonal antibody raised against residues near the C terminus of human BRF2. It recognizes a 50-60 kDa band in WB analysis.

## Notable Publications

Author	Pubmed ID	Journal	Application
Jianfeng Sun	36369505	Nat Commun	WB

## Storage

## Storage:

Store at -20°C. Stable for one year after shipment.

## Storage Buffer:

PBS with 0.02% sodium azide and 50% glycerol pH 7.3.

Aliquoting is unnecessary for -20°C storage

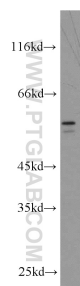
For technical support and original validation data for this product please contact:

T: 4006900926

E: [Proteintech-CN@ptglab.com](mailto:Proteintech-CN@ptglab.com)W: [ptgcn.com](http://ptgcn.com)

This product is exclusively available under Proteintech Group brand and is not available to purchase from any other manufacturer.

## Selected Validation Data



HT-1080 cells were subjected to SDS PAGE followed by western blot with 12056-1-AP (BRF2 antibody) at dilution of 1:300 incubated at room temperature for 1.5 hours.