

SLU7 Polyclonal antibody

Catalog Number: 12050-1-AP

Featured Product

2 Publications

Basic Information

Catalog Number:

12050-1-AP

Size:

300 µg/ml

Source:

Rabbit

Isotype:

IgG

Immunogen Catalog Number:

AG2680

GenBank Accession Number:

BC010634

GeneID (NCBI):

10569

UNIPROT ID:

O95391

Full Name:

SLU7 splicing factor homolog (S. cerevisiae)

Calculated MW:

586 aa, 68 kDa

Observed MW:

68 kDa

Purification Method:

Antigen affinity purification

Recommended Dilutions:

WB 1:500-1:2000

IHC 1:50-1:500

Applications

Tested Applications:

WB, IHC, ELISA

Cited Applications:

WB, IF, RIP, IHC

Species Specificity:

human, mouse, rat

Cited Species:

human, mouse

Note-IHC: suggested antigen retrieval with TE buffer pH 9.0; (*) Alternatively, antigen retrieval may be performed with citrate buffer pH 6.0

Positive Controls:

WB: Jurkat cells, HeLa cells, mouse colon tissue, K-562 cells, Y79 cells

IHC: mouse pancreas tissue, human colon cancer tissue, rat pancreas tissue, rat stomach tissue

Background Information

Pre-mRNA splicing occurs in two sequential transesterification steps. SLU7 is a splicing factor that has been found to be essential during the second catalytic step in the pre-mRNA splicing process. It associates with the spliceosome and contains a zinc knuckle motif that is found in other splicing factors and is involved in protein-nucleic acid and protein-protein interactions.

Notable Publications

Author	Pubmed ID	Journal	Application
Xianchong Zheng	38084438	Adv Sci (Weinh)	WB, IHC, IF
Runjie Song	37408008	Mol Cancer	RIP

Storage

Storage:

Store at -20°C. Stable for one year after shipment.

Storage Buffer:

PBS with 0.02% sodium azide and 50% glycerol pH 7.3.

Aliquoting is unnecessary for -20°C storage

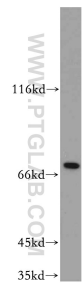
For technical support and original validation data for this product please contact:

T: 4006900926

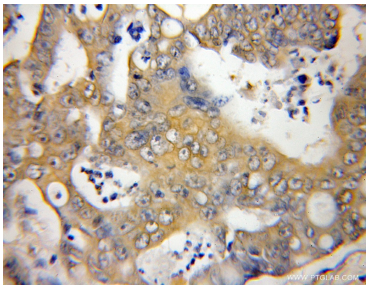
E: Proteintech-CN@ptglab.comW: ptgcn.com

This product is exclusively available under Proteintech Group brand and is not available to purchase from any other manufacturer.

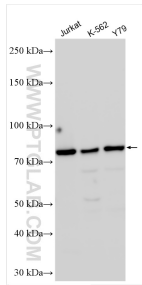
Selected Validation Data



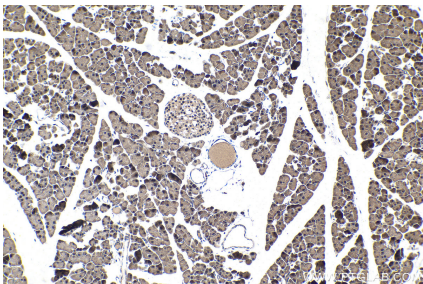
Jurkat cells were subjected to SDS PAGE followed by western blot with 12050-1-AP (SLU7 antibody) at dilution of 1:100 incubated at room temperature for 1.5 hours.



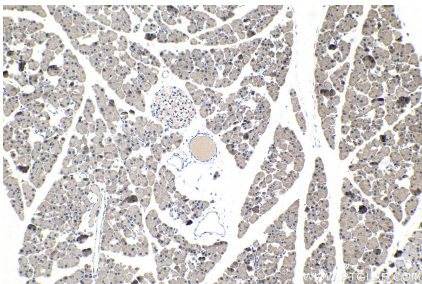
Immunohistochemical analysis of paraffin-embedded human colon cancer using 12050-1-AP (SLU7 antibody) at dilution of 1:50 (under 10x lens).



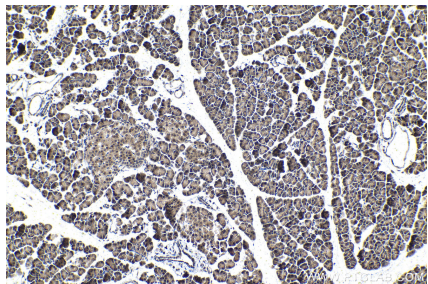
Various lysates were subjected to SDS PAGE followed by western blot with 12050-1-AP (SLU7 antibody) at dilution of 1:1000 incubated at room temperature for 1.5 hours.



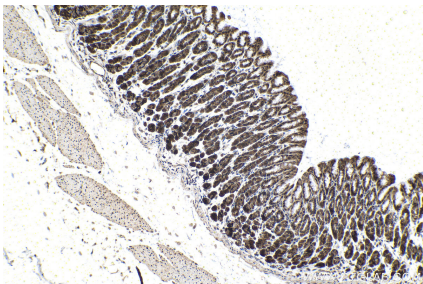
Immunohistochemical analysis of paraffin-embedded mouse pancreas tissue slide using 12050-1-AP (SLU7 antibody) at dilution of 1:200 (under 10x lens). Heat mediated antigen retrieval with Tris-EDTA buffer (pH 9.0).



Immunohistochemical analysis of paraffin-embedded mouse pancreas tissue slide using 12050-1-AP (SLU7 antibody) at dilution of 1:500 (under 10x lens). Heat mediated antigen retrieval with Tris-EDTA buffer (pH 9.0).



Immunohistochemical analysis of paraffin-embedded rat pancreas tissue slide using 12050-1-AP (SLU7 antibody) at dilution of 1:200 (under 10x lens). Heat mediated antigen retrieval with Tris-EDTA buffer (pH 9.0).



Immunohistochemical analysis of paraffin-embedded rat stomach tissue slide using 12050-1-AP (SLU7 antibody) at dilution of 1:200 (under 10x lens). Heat mediated antigen retrieval with Tris-EDTA buffer (pH 9.0).