

For Research Use Only

# CRX Polyclonal antibody

Catalog Number: 12047-1-AP **2 Publications**



## Basic Information

**Catalog Number:**

12047-1-AP

**Size:**

1000 µg/ml

**Source:**

Rabbit

**Isotype:**

IgG

**Immunogen Catalog Number:**

AG2677

**GenBank Accession Number:**

BC016664

**GeneID (NCBI):**

1406

**UNIPROT ID:**

O43186

**Full Name:**

cone-rod homeobox

**Calculated MW:**

299 aa, 32 kDa

**Observed MW:**

37 kDa

**Purification Method:**

Antigen affinity purification

**Recommended Dilutions:**

WB 1:500-1:1000

IP 0.5-4.0 µg for 1.0-3.0 mg of total protein lysate

IHC 1:2000-1:8000

## Applications

**Tested Applications:**

IHC, IP, WB, ELISA

**Cited Applications:**

WB, IF, CoIP

**Species Specificity:**

human, mouse, rat

**Cited Species:**

human, rat

**Note-IHC: suggested antigen retrieval with TE buffer pH 9.0; (\*) Alternatively, antigen retrieval may be performed with citrate buffer pH 6.0**

**Positive Controls:**

WB : Y79 cells,

IP : Y79 cells,

IHC : mouse eye tissue, mouse testis tissue

## Background Information

Cone-rod homeobox (Crx) is a homeodomain transcription factor and member of the Otx family, which has been thought to play a critical role in determining and maintaining the phenotype of both pinealocytes and retinal photoreceptors [PMID:17467693]. In the mammalian retina, Crx plays an essential role in the normal development and maintenance of cones and rods and regulates expression of the network of genes that characterize the retina [PMID:17653270]. Elimination of Crx by disruption of the homeobox domain results in loss of the image-forming visual system but not the non-image-forming visual system controlling circadian rhythms [PMID:20438719].

## Notable Publications

Author	Pubmed ID	Journal	Application
Haibin Tian	36185374	iScience	IF
Tomohiro Masuda	25392503	J Neurosci	WB, CoIP

## Storage

**Storage:**

Store at -20°C. Stable for one year after shipment.

**Storage Buffer:**

PBS with 0.02% sodium azide and 50% glycerol pH 7.3.

Aliquoting is unnecessary for -20°C storage

For technical support and original validation data for this product please contact:

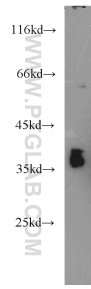
T: 4006900926

E: Proteintech-CN@ptglab.com

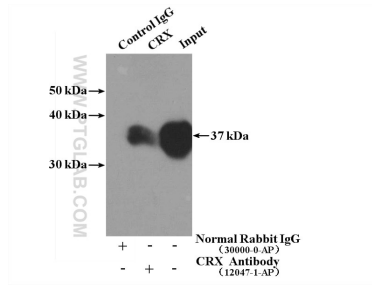
W: ptgcn.com

**This product is exclusively available under Proteintech Group brand and is not available to purchase from any other manufacturer.**

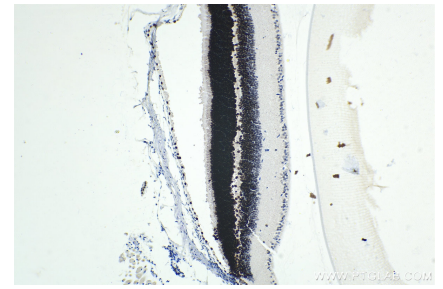
## Selected Validation Data



Y79 cells were subjected to SDS PAGE followed by western blot with 12047-1-AP (CRX antibody) at dilution of 1:500 incubated at room temperature for 1.5 hours.



IP result of anti-CRX (IP:12047-1-AP, 4ug; Detection:12047-1-AP 1:500) with Y79 cells lysate 1920ug.



Immunohistochemical analysis of paraffin-embedded mouse eye tissue slide using 12047-1-AP (CRX antibody) at dilution of 1:4000 (under 10x lens). Heat mediated antigen retrieval with Tris-EDTA buffer (pH 9.0).