

For Research Use Only

# MLX Polyclonal antibody

Catalog Number: 12042-1-AP

Featured Product

4 Publications



## Basic Information

### Catalog Number:

12042-1-AP

### Size:

900 µg/ml

### Source:

Rabbit

### Isotype:

IgG

### Immunogen Catalog Number:

AG2671

### GenBank Accession Number:

BC010689

### GeneID (NCBI):

6945

### UNIPROT ID:

Q9UH92

### Full Name:

MAX-like protein X

### Calculated MW:

298 aa, 33 kDa

### Observed MW:

33 kDa

### Purification Method:

Antigen affinity purification

### Recommended Dilutions:

WB 1:500-1:1000

IHC 1:20-1:200

## Applications

### Tested Applications:

IHC, WB, ELISA

### Cited Applications:

WB, IF, IHC

### Species Specificity:

human, mouse, rat

### Cited Species:

human, mouse

**Note-IHC: suggested antigen retrieval with TE buffer pH 9.0; (\*) Alternatively, antigen retrieval may be performed with citrate buffer pH 6.0**

### Positive Controls:

WB : mouse thymus tissue, mouse ovary tissue

IHC : human prostate cancer tissue,

## Background Information

## Notable Publications

Author	Pubmed ID	Journal	Application
Patrick A Carroll	34669700	PLoS Biol	IF
Hua Liao	21873567	Mol Cell Proteomics	WB
Julie Martone	32337838	EMBO Rep	WB,IF

## Storage

### Storage:

Store at -20°C. Stable for one year after shipment.

### Storage Buffer:

PBS with 0.02% sodium azide and 50% glycerol pH 7.3.

Aliquoting is unnecessary for -20°C storage

For technical support and original validation data for this product please contact:

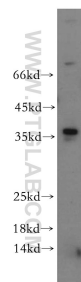
T: 4006900926

E: [Proteintech-CN@ptglab.com](mailto:Proteintech-CN@ptglab.com)

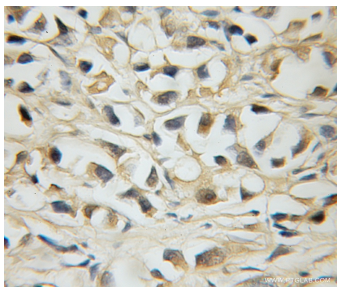
W: [ptgcn.com](http://ptgcn.com)

This product is exclusively available under Proteintech Group brand and is not available to purchase from any other manufacturer.

## Selected Validation Data



mouse thymus tissue were subjected to SDS PAGE followed by western blot with 12042-1-AP (MLX antibody) at dilution of 1:200 incubated at room temperature for 1.5 hours.



Immunohistochemical analysis of paraffin-embedded human prostate cancer using 12042-1-AP (MLX antibody) at dilution of 1:50 (under 10x lens).