

For Research Use Only

KIF12 Polyclonal antibody, PBS Only

Catalog Number:12035-1-PBS



Basic Information

Catalog Number: 12035-1-PBS	GenBank Accession Number: BC010626	Purification Method: Antigen affinity purification
Source: Rabbit	GeneID (NCBI): 113220	
Isotype: IgG	UNIPROT ID: Q96FN5	
Immunogen Catalog Number: AG2707	Full Name: kinesin family member 12	
	Calculated MW: 646 aa, 71 kDa	
	Observed MW: 55-70 kDa	

Applications

Tested Applications:
WB, IHC, Indirect ELISA

Species Specificity:
human, mouse, rat

Background Information

KIF12(kinesin family member 12) is a member of the kinesin superfamily (KIF), which is a microtubule-dependent ATP-driven molecular motor, and its core is involved in the regulation of organelle transport, cell division and metabolic enzyme degradation. Its functional defects are closely related to bile duct diseases, liver diseases and tumors.

Storage

Storage:
Store at -80°C.
The product is shipped with ice packs. Upon receipt, store it immediately at -80°C

Storage Buffer:
PBS only, pH7.3

For technical support and original validation data for this product please contact:

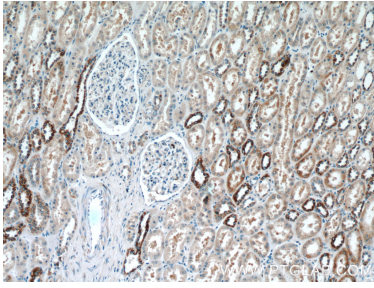
T: 4006900926

E: Proteintech-CN@ptglab.com

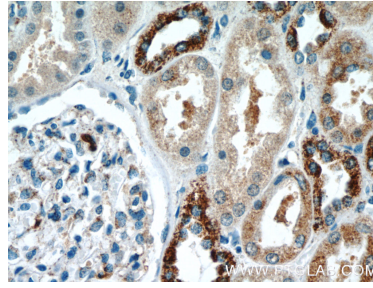
W: ptgcn.com

This product is exclusively available under Proteintech Group brand and is not available to purchase from any other manufacturer.

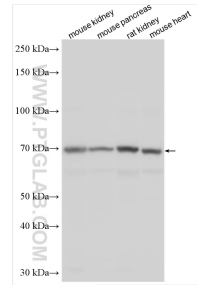
Selected Validation Data



Immunohistochemical analysis of paraffin-embedded human kidney tissue slide using 12035-1-AP (KIF 12 Antibody) at dilution of 1:50 (under 10x lens). This data was developed using the same antibody clone with 12035-1-PBS in a different storage buffer formulation.



Immunohistochemical analysis of paraffin-embedded human kidney tissue slide using 12035-1-AP (KIF 12 Antibody) at dilution of 1:50 (under 40x lens). This data was developed using the same antibody clone with 12035-1-PBS in a different storage buffer formulation.



Various lysates were subjected to SDS PAGE followed by western blot with 12035-1-AP (KIF 12 antibody) at dilution of 1:6000 incubated at room temperature for 1.5 hours. This data was developed using the same antibody clone with 12035-1-PBS in a different storage buffer formulation.