

For Research Use Only

# KCNIP3 Polyclonal antibody, PBS Only

Catalog Number:12032-1-PBS



## Basic Information

<b>Catalog Number:</b> 12032-1-PBS	<b>GenBank Accession Number:</b> BC012850	<b>Purification Method:</b> Antigen affinity purification
<b>Concentration:</b> 1 mg/ml	<b>GeneID (NCBI):</b> 30818	
<b>Source:</b> Rabbit	<b>UNIPROT ID:</b> Q9Y2W7	
<b>Isotype:</b> IgG	<b>Full Name:</b> Kv channel interacting protein 3, calsenilin	
<b>Immunogen Catalog Number:</b> AG2665	<b>Calculated MW:</b> 256 aa, 29 kDa	
	<b>Observed MW:</b> 29 kDa, 27 kDa	

## Applications

**Tested Applications:**  
WB, IHC, IF/ICC, IP, Indirect ELISA

**Species Specificity:**  
human, mouse

## Background Information

KCNIP3 also known as Calsenilin, CSEN, DREAM, or KCHIP3, is a protein-coding gene located on human chromosome 2q11.1. It encodes a small calcium-binding protein belonging to the recoverin branch of the EF-hand superfamily. KCNIP3 is an integral subunit of native Kv4 channel complexes, regulating A-type potassium currents in response to intracellular calcium changes, thereby modulating neuronal excitability. KCNIP3 interacts with presenilin 1 (PSEN1) and presenilin 2 (PSEN2), influencing  $\gamma$ -secretase activity and  $\beta$ -amyloid formation, potentially linking it to Alzheimer's disease pathology.

## Storage

**Storage:**  
Store at -80°C.  
**The product is shipped with ice packs. Upon receipt, store it immediately at -80°C**

**Storage Buffer:**  
PBS only, pH7.3

For technical support and original validation data for this product please contact:

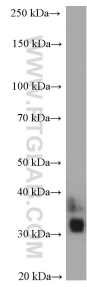
T: 4006900926

E: [Proteintech-CN@ptglab.com](mailto:Proteintech-CN@ptglab.com)

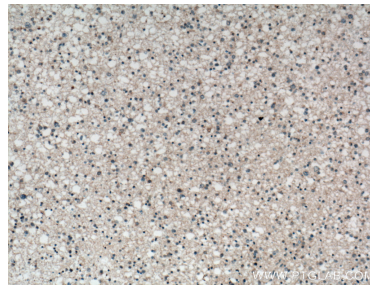
W: [ptgcn.com](http://ptgcn.com)

**This product is exclusively available under Proteintech Group brand and is not available to purchase from any other manufacturer.**

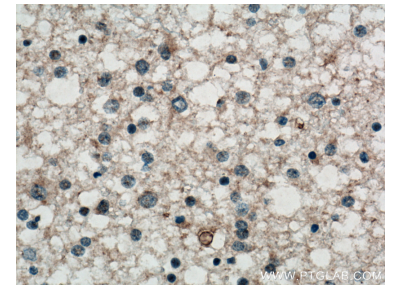
## Selected Validation Data



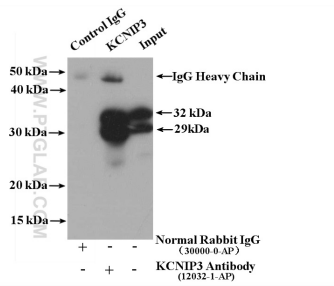
mouse brain tissue were subjected to SDS PAGE followed by western blot with 12032-1-AP (KCINP3 antibody) at dilution of 1:1000 incubated at room temperature for 1.5 hours. This data was developed using the same antibody clone with 12032-1-PBS in a different storage buffer formulation.



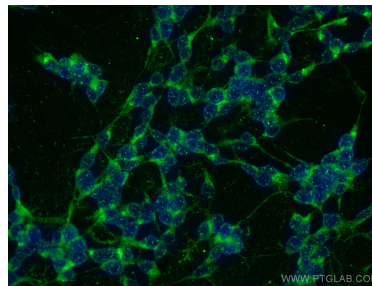
Immunohistochemical analysis of paraffin-embedded human gliomas tissue slide using 12032-1-AP (KCINP3 antibody) at dilution of 1:100 (under 10x lens). This data was developed using the same antibody clone with 12032-1-PBS in a different storage buffer formulation.



Immunohistochemical analysis of paraffin-embedded human gliomas tissue slide using 12032-1-AP (KCINP3 antibody) at dilution of 1:100 (under 40x lens). This data was developed using the same antibody clone with 12032-1-PBS in a different storage buffer formulation.



IP result of anti-KCINP3 (IP:12032-1-AP, 4ug; Detection:12032-1-AP 1:1000) with mouse brain tissue lysate 4400 ug. This data was developed using the same antibody clone with 12032-1-PBS in a different storage buffer formulation.



Immunofluorescent analysis of (-20°C Ethanol) fixed SH-SY5Y cells using KCINP3 antibody (12032-1-AP) at dilution of 1:400 and CoraLite@488-Conjugated AffiniPure Goat Anti-Rabbit IgG(H+L). This data was developed using the same antibody clone with 12032-1-PBS in a different storage buffer formulation.