

For Research Use Only

WBP2 Polyclonal antibody

Catalog Number: 12030-1-AP

Featured Product

7 Publications



Basic Information

Catalog Number:

12030-1-AP

Size:

800 ug/ml

Source:

Rabbit

Isotype:

IgG

Immunogen Catalog Number:

AG2661

GenBank Accession Number:

BC010616

GeneID (NCBI):

23558

UNIPROT ID:

Q969T9

Full Name:

WW domain binding protein 2

Calculated MW:

261 aa, 28 kDa

Observed MW:

30-40 kDa

Purification Method:

Antigen affinity purification

Recommended Dilutions:

WB 1:500-1:1000

IP 0.5-4.0 ug for 1.0-3.0 mg of total protein lysate

IHC 1:50-1:500

IF/ICC 1:200-1:800

Applications

Tested Applications:

WB, IHC, IF/ICC, IP, ELISA

Cited Applications:

WB, IHC, IF

Species Specificity:

human, mouse, rat

Cited Species:

human, mouse, rat, zebrafish

Note-IHC: suggested antigen retrieval with TE buffer pH 9.0; (*) Alternatively, antigen retrieval may be performed with citrate buffer pH 6.0

Positive Controls:

WB : A375 cells, HEK-293 cells, MCF-7 cells, MDA-MB-435s cells

IP : A375 cells,

IHC : mouse testis tissue, human breast cancer tissue, human gliomas tissue

IF/ICC : A375 cells,

Background Information

Notable Publications

Author	Pubmed ID	Journal	Application
Natania S Field	32459862	Eur J Immunol	WB
Zhe Zheng	33658485	Cell Death Dis	WB, IF
Xuehui Wang	35236829	Cell Death Discov	WB, IHC

Storage

Storage:

Store at -20°C. Stable for one year after shipment.

Storage Buffer:

PBS with 0.02% sodium azide and 50% glycerol pH 7.3.

Aliquoting is unnecessary for -20°C storage

For technical support and original validation data for this product please contact:

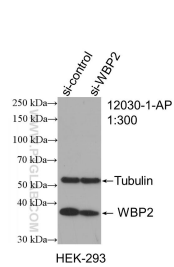
T: 4006900926

E: Proteintech-CN@ptglab.com

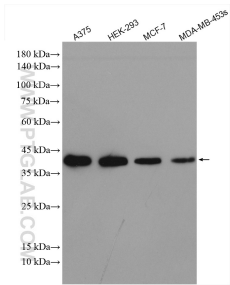
W: ptgcn.com

This product is exclusively available under Proteintech Group brand and is not available to purchase from any other manufacturer.

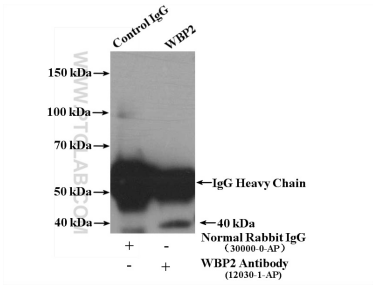
Selected Validation Data



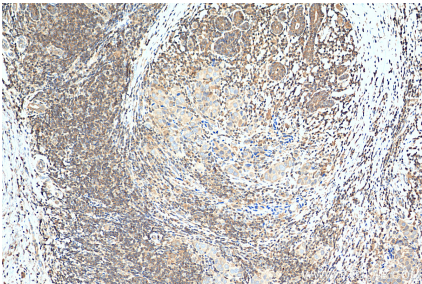
WB result of WBP2 antibody (12030-1-AP; 1:300; incubated at room temperature for 1.5 hours) with sh-Control and sh-WBP2 transfected HEK-293 cells.



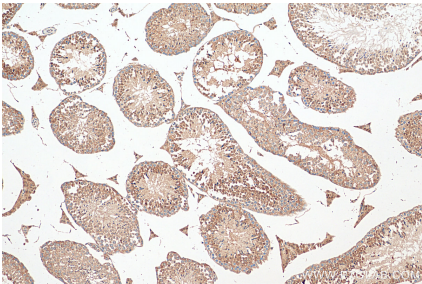
Various lysates were subjected to SDS PAGE followed by western blot with 12030-1-AP (WBP2 antibody) at dilution of 1:500 incubated at room temperature for 1.5 hours.



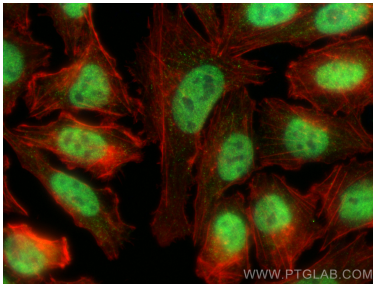
IP result of anti-WBP2 (IP:12030-1-AP, 4ug; Detection:12030-1-AP 1:300) with A375 cells lysate 3600 ug.



Immunohistochemical analysis of paraffin-embedded human breast cancer tissue slide using 12030-1-AP (WBP2 antibody) at dilution of 1:200 (under 10x lens). Heat mediated antigen retrieval with Tris-EDTA buffer (pH 9.0).



Immunohistochemical analysis of paraffin-embedded mouse testis tissue slide using 12030-1-AP (WBP2 antibody) at dilution of 1:200 (under 10x lens). Heat mediated antigen retrieval with Tris-EDTA buffer (pH 9.0).



Immunofluorescent analysis of (4% PFA) fixed A375 cells using WBP2 antibody (12030-1-AP) at dilution of 1:400 and CoraLite@488-Conjugated Goat Anti-Rabbit IgG(H+L) (SA00013-2), CL594-phalloidin (red).