

For Research Use Only

MYCBP Polyclonal antibody, PBS Only

Catalog Number: 12022-1-PBS

Featured Product



Basic Information

Catalog Number:

12022-1-PBS

Size:

1 mg/ml

Source:

Rabbit

Isotype:

IgG

Immunogen Catalog Number:

AG2651

GenBank Accession Number:

BC008686

GeneID (NCBI):

26292

UNIPROT ID:

Q99417

Full Name:

c-myc binding protein

Calculated MW:

103 aa, 12 kDa

Observed MW:

12 kDa

Purification Method:

Antigen affinity purification

Applications

Tested Applications:

WB, IHC, IF/ICC, Indirect ELISA

Species Specificity:

human

Background Information

MYC binding protein (MYCBP), encoded by MYCBP gene, binds to N-terminal region of MYC, and then MYC can activate E box-dependent transcription. Upon increasing expression of MYC, MYCBP translocates into the nucleus in the S phase of the cell cycle. MYCBP may involve in spermatogenesis, since it's found to be interacted with AKAP84/149 in the mitochondria in somatic cells and sperm. It highly expressed in heart, placenta, pancreas, skeletal muscle and kidney, but low in lung. This is a rabbit polyclonal antibody raised against full-length MYCBP of human origin.

Storage

Storage:

Store at -80°C.

The product is shipped with ice packs. Upon receipt, store it immediately at -80°C

Storage Buffer:

PBS Only

For technical support and original validation data for this product please contact:

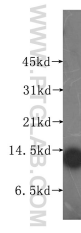
T: 4006900926

E: Proteintech-CN@ptglab.com

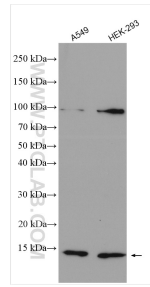
W: ptgcn.com

This product is exclusively available under Proteintech Group brand and is not available to purchase from any other manufacturer.

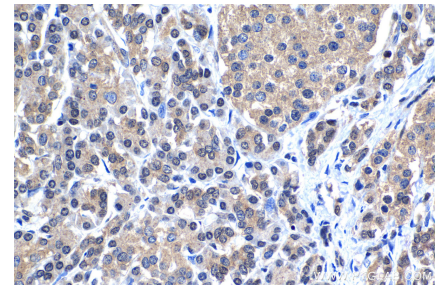
Selected Validation Data



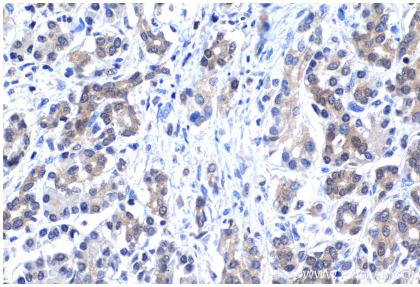
human heart tissue were subjected to SDS PAGE followed by western blot with 12022-1-AP (MYCBP antibody) at dilution of 1:500 incubated at room temperature for 1.5 hours. This data was developed using the same antibody clone with 12022-1-PBS in a different storage buffer formulation.



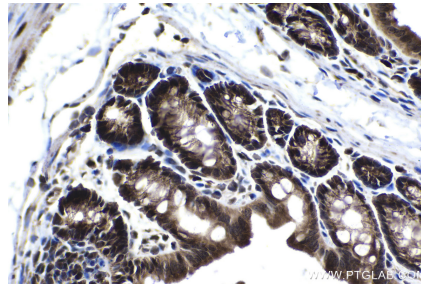
Various lysates were subjected to SDS PAGE followed by western blot with 12022-1-AP (MYCBP antibody) at dilution of 1:1000 incubated at room temperature for 1.5 hours. This data was developed using the same antibody clone with 12022-1-PBS in a different storage buffer formulation.



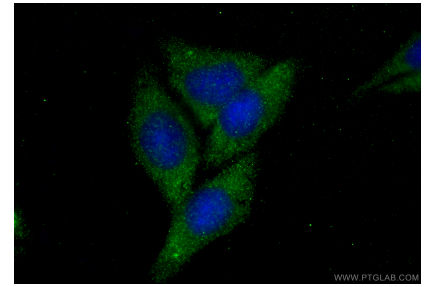
Immunohistochemical analysis of paraffin-embedded human pancreas cancer tissue slide using 12022-1-AP (MYCBP antibody) at dilution of 1:1000 (under 40x lens). Heat mediated antigen retrieval with Tris-EDTA buffer (pH 9.0). This data was developed using the same antibody clone with 12022-1-PBS in a different storage buffer formulation.



Immunohistochemical analysis of paraffin-embedded human pancreas cancer tissue slide using 12022-1-AP (MYCBP antibody) at dilution of 1:1000 (under 40x lens). Heat mediated antigen retrieval with Tris-EDTA buffer (pH 9.0). This data was developed using the same antibody clone with 12022-1-PBS in a different storage buffer formulation.



Immunohistochemical analysis of paraffin-embedded mouse colon tissue slide using 12022-1-AP (MYCBP antibody) at dilution of 1:500 (under 40x lens). Heat mediated antigen retrieval with Tris-EDTA buffer (pH 9.0). This data was developed using the same antibody clone with 12022-1-PBS in a different storage buffer formulation.



Immunofluorescent analysis of (-20°C Ethanol) fixed HepG2 cells using MYCBP antibody (12022-1-AP) at dilution of 1:200 and CoraLite®488-Conjugated Goat Anti-Rabbit IgG(H+L) (SA00013-2). This data was developed using the same antibody clone with 12022-1-PBS in a different storage buffer formulation.