

For Research Use Only

# MYCBP Polyclonal antibody

Catalog Number: 12022-1-AP

Featured Product

6 Publications



## Basic Information

Catalog Number:

12022-1-AP

Concentration:

600 ug/ml

Source:

Rabbit

Isotype:

IgG

Immunogen Catalog Number:

AG2651

GenBank Accession Number:

BC008686

GeneID (NCBI):

26292

UNIPROT ID:

Q99417

Full Name:

c-myc binding protein

Calculated MW:

103 aa, 12 kDa

Observed MW:

12 kDa

Purification Method:

Antigen affinity purification

Recommended Dilutions:

WB 1:500-1:3000

IHC 1:500-1:2000

IF/ICC 1:50-1:500

## Applications

Tested Applications:

WB, IHC, IF/ICC, ELISA

Cited Applications:

WB, IF

Species Specificity:

human

Cited Species:

human, mouse

**Note-IHC: suggested antigen retrieval with TE buffer pH 9.0; (\*) Alternatively, antigen retrieval may be performed with citrate buffer pH 6.0**

Positive Controls:

**WB** : human heart tissue, A549 cells, human kidney tissue, human lung tissue, human placenta tissue, HEK-293 cells

**IHC** : human pancreas cancer tissue, mouse colon tissue

**IF/ICC** : HepG2 cells,

## Background Information

MYC binding protein(MYCBP), encoded by MYCBP gene, binds to N-terminal region of MYC, and then MYC can activate E box-dependent transcription. Upon increasing expression of MYC, MYCBP translocates into the nucleus in the S phase of the cell cycle. MYCBP may involve in spermatogenesis, since it's found to be interacted with AKAP84/149 in the mitochondria in somatic cells and sperm. It highly expressed in heart, placenta, pancreas, skeletal muscle and kidney, but low in lung. This is a rabbit polyclonal antibody raised against full-length MYCBP of human origin.

## Notable Publications

Author	Pubmed ID	Journal	Application
Yongqi Wang	32965772	J Cell Mol Med	WB
Hagai Marmor-Kollet	33217318	Mol Cell	IF
S Mathia	29791781	Acta Physiol (Oxf)	WB

## Storage

Storage:

Store at -20°C. Stable for one year after shipment.

Storage Buffer:

PBS with 0.02% sodium azide and 50% glycerol, pH7.3

Aliquoting is unnecessary for -20°C storage

For technical support and original validation data for this product please contact:

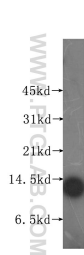
T: 4006900926

E: Proteintech-CN@ptglab.com

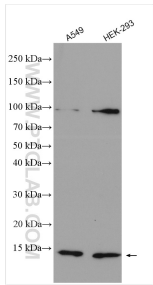
W: ptgcn.com

**This product is exclusively available under Proteintech Group brand and is not available to purchase from any other manufacturer.**

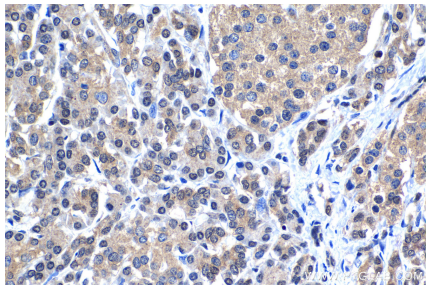
Selected Validation Data



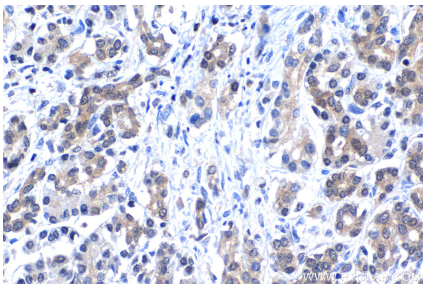
human heart tissue were subjected to SDS PAGE followed by western blot with 12022-1-AP (MYCBP antibody) at dilution of 1:500 incubated at room temperature for 1.5 hours.



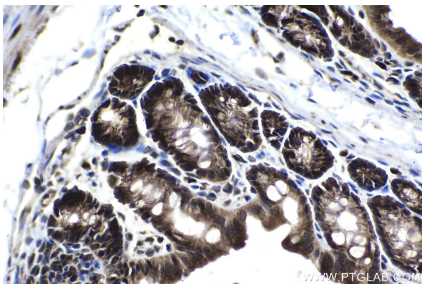
Various lysates were subjected to SDS PAGE followed by western blot with 12022-1-AP (MYCBP antibody) at dilution of 1:1000 incubated at room temperature for 1.5 hours.



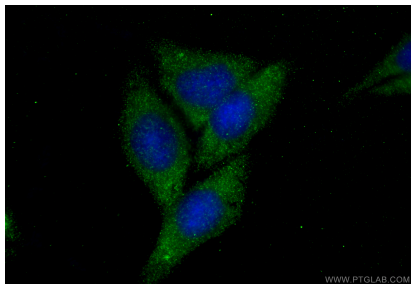
Immunohistochemical analysis of paraffin-embedded human pancreas cancer tissue slide using 12022-1-AP (MYCBP antibody) at dilution of 1:1000 (under 40x lens). Heat mediated antigen retrieval with Tris-EDTA buffer (pH 9.0).



Immunohistochemical analysis of paraffin-embedded human pancreas cancer tissue slide using 12022-1-AP (MYCBP antibody) at dilution of 1:1000 (under 40x lens). Heat mediated antigen retrieval with Tris-EDTA buffer (pH 9.0).



Immunohistochemical analysis of paraffin-embedded mouse colon tissue slide using 12022-1-AP (MYCBP antibody) at dilution of 1:500 (under 40x lens). Heat mediated antigen retrieval with Tris-EDTA buffer (pH 9.0).



Immunofluorescent analysis of (-20°C Ethanol) fixed HepG2 cells using MYCBP antibody (12022-1-AP) at dilution of 1:200 and CoraLite®488-Conjugated Goat Anti-Rabbit IgG(H+L) (SA00013-2).