

For Research Use Only

UBE2G1 Polyclonal antibody

Catalog Number: 12012-1-AP

Featured Product

2 Publications



Basic Information

Catalog Number:

12012-1-AP

Size:

260 µg/ml

Source:

Rabbit

Isotype:

IgG

Immunogen Catalog Number:

AG2625

GenBank Accession Number:

BC026288

GeneID (NCBI):

7326

UNIPROT ID:

P62253

Full Name:

ubiquitin-conjugating enzyme E2G 1
(UBC7 homolog, yeast)

Calculated MW:

170 aa, 19 kDa

Observed MW:

20 kDa

Purification Method:

Antigen affinity purification

Recommended Dilutions:

WB 1:500-1:1000

IF 1:10-1:100

Applications

Tested Applications:

IF/ICC, WB, ELISA

Cited Applications:

WB

Species Specificity:

human, mouse, rat

Cited Species:

human

Positive Controls:

WB : HeLa cells,

IF : HepG2 cells,

Background Information

Notable Publications

Author	Pubmed ID	Journal	Application
Lu Lv	32804079	Elife	WB
Kate E Coleman	26272819	Genes Dev	WB

Storage

Storage:

Store at -20°C. Stable for one year after shipment.

Storage Buffer:

PBS with 0.02% sodium azide and 50% glycerol pH 7.3.

Aliquoting is unnecessary for -20°C storage

For technical support and original validation data for this product please contact:

T: 4006900926

E: Proteintech-CN@ptglab.com

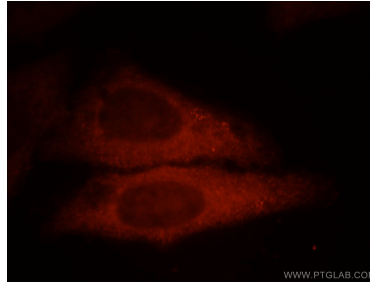
W: ptgcn.com

This product is exclusively available under Proteintech Group brand and is not available to purchase from any other manufacturer.

Selected Validation Data



HeLa cells were subjected to SDS PAGE followed by western blot with 12012-1-AP (UBE2G1 antibody) at dilution of 1:100 incubated at room temperature for 1.5 hours.



Immunofluorescent analysis of HepG2 cells, using UBE2G1 antibody 12012-1-AP at 1:25 dilution and Rhodamine-labeled goat anti-rabbit IgG (red).