

For Research Use Only

RPS3 Polyclonal antibody, PBS Only

Catalog Number: 11990-1-PBS

Featured Product



Basic Information

Catalog Number:

11990-1-PBS

Size:

1 mg/ml

Source:

Rabbit

Isotype:

IgG

Immunogen Catalog Number:

AG3918

GenBank Accession Number:

BC034149

GeneID (NCBI):

6188

UNIPROT ID:

P23396

Full Name:

ribosomal protein S3

Calculated MW:

26 aa, 7 kDa

Observed MW:

26.7 kDa

Purification Method:

Antigen affinity purification

Applications

Tested Applications:

WB, IHC, IF/ICC, IP, Indirect ELISA

Species Specificity:

human, mouse, rat

Background Information

40S ribosomal protein S3 (RPS3), also named as SW-cl.26, is a 243 amino acid protein, which contains one KH type-2 domain and belongs to the ribosomal protein S3P family. RPS3 localizes in the cytoplasm. RPS3 is identified in a IGF2BP1-dependent mRNP granule complex, which contains untranslated mRNAs. RPS3 plays a role in repairing various DNA damage acting as a repair UV endonuclease. Nuclear accumulation of RPS3 results in an increase in DNA repair activity to some extent, thereby sustaining neuronal survival.

Storage

Storage:

Store at -80°C.

The product is shipped with ice packs. Upon receipt, store it immediately at -80°C

Storage Buffer:

PBS Only

For technical support and original validation data for this product please contact:

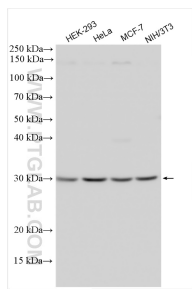
T: 4006900926

E: Proteintech-CN@ptglab.com

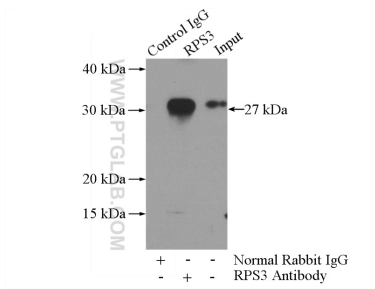
W: ptgcn.com

This product is exclusively available under Proteintech Group brand and is not available to purchase from any other manufacturer.

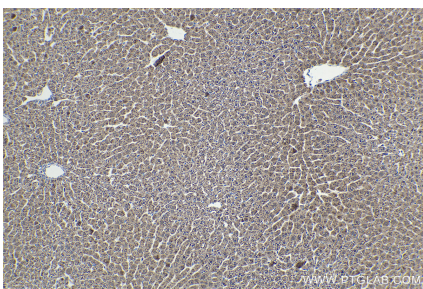
Selected Validation Data



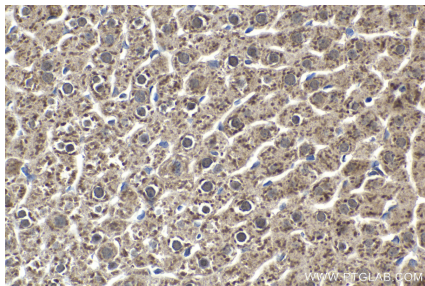
Various lysates were subjected to SDS PAGE followed by western blot with 11990-1-AP (RPS3 antibody) at dilution of 1:3000 incubated at room temperature for 1.5 hours. This data was developed using the same antibody clone with 11990-1-PBS in a different storage buffer formulation.



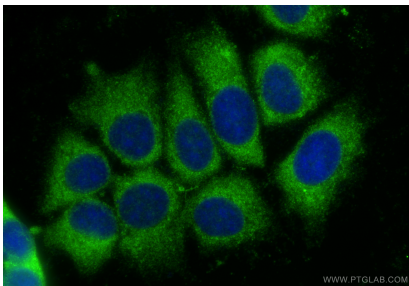
IP result of anti-RPS3 (IP:11990-1-AP, 3ug; Detection:11990-1-AP 1:600) with mouse testis tissue lysate 4000ug. This data was developed using the same antibody clone with 11990-1-PBS in a different storage buffer formulation.



Immunohistochemical analysis of paraffin-embedded rat liver tissue slide using 11990-1-AP (RPS3 antibody) at dilution of 1:1000 (under 10x lens). Heat mediated antigen retrieval with Tris-EDTA buffer (pH 9.0). This data was developed using the same antibody clone with 11990-1-PBS in a different storage buffer formulation.



Immunohistochemical analysis of paraffin-embedded rat liver tissue slide using 11990-1-AP (RPS3 antibody) at dilution of 1:1000 (under 40x lens). Heat mediated antigen retrieval with Tris-EDTA buffer (pH 9.0). This data was developed using the same antibody clone with 11990-1-PBS in a different storage buffer formulation.



Immunofluorescent analysis of (-20°C Methanol) fixed MCF-7 cells using RPS3 antibody (11990-1-AP) at dilution of 1:400 and CoraLite®488-Conjugated Goat Anti-Rabbit IgG(H+L) (SA00013-2). This data was developed using the same antibody clone with 11990-1-PBS in a different storage buffer formulation.