

For Research Use Only

TMED2 Polyclonal antibody

Catalog Number: 11981-1-AP

8 Publications



Basic Information

Catalog Number:

11981-1-AP

Size:

260 µg/ml

Source:

Rabbit

Isotype:

IgG

Immunogen Catalog Number:

AG2607

GenBank Accession Number:

BC025957

GeneID (NCBI):

10959

UNIPROT ID:

Q15363

Full Name:

transmembrane emp24 domain
trafficking protein 2

Calculated MW:

201 aa, 23 kDa

Observed MW:

20-23 kDa

Purification Method:

Antigen affinity purification

Recommended Dilutions:

WB 1:1000-1:4000

IHC 1:20-1:200

Applications

Tested Applications:

WB, IHC, ELISA

Cited Applications:

WB, IHC, IF

Species Specificity:

human, mouse, rat

Cited Species:

human, mouse

**Note-IHC: suggested antigen retrieval with
TE buffer pH 9.0; (*) Alternatively, antigen
retrieval may be performed with citrate
buffer pH 6.0**

Positive Controls:

WB : HEK-293 cells, mouse pancreas tissue, mouse skin
tissue, mouse liver tissue, HeLa cells, rat kidney tissue

IHC : human pancreas cancer tissue,

Background Information

Notable Publications

| Author | Pubmed ID | Journal | Application |
|-----------|-----------|-----------------|-------------|
| Shulin Li | 34561617 | Cell Res | WB |
| Xihua Yue | 34493279 | BMC Biol | WB |
| Hak Park | 35748162 | Adv Sci (Weinh) | WB |

Storage

Storage:

Store at -20°C. Stable for one year after shipment.

Storage Buffer:

PBS with 0.02% sodium azide and 50% glycerol pH 7.3.

Aliquoting is unnecessary for -20°C storage

For technical support and original validation data for this product please contact:

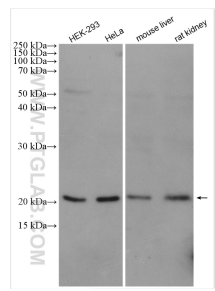
T: 4006900926

E: Proteintech-CN@ptglab.com

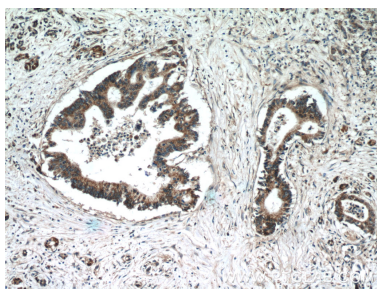
W: ptgcn.com

**This product is exclusively available under Proteintech
Group brand and is not available to purchase from any
other manufacturer.**

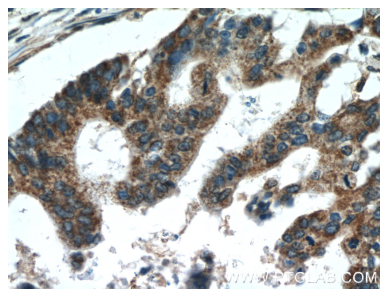
Selected Validation Data



Various lysates were subjected to SDS PAGE followed by western blot with 11981-1-AP (TMED2 antibody) at dilution of 1:4000 incubated at room temperature for 1.5 hours.



Immunohistochemical analysis of paraffin-embedded human pancreas cancer tissue slide using 11981-1-AP (TMED2 Antibody) at dilution of 1:50 (under 10x lens).



Immunohistochemical analysis of paraffin-embedded human pancreas cancer tissue slide using 11981-1-AP (TMED2 Antibody) at dilution of 1:50 (under 40x lens).