

For Research Use Only

# MCPH/BRIT1 Polyclonal antibody

Catalog Number: 11962-1-AP

Featured Product

4 Publications



## Basic Information

**Catalog Number:**

11962-1-AP

**Size:**

1000 µg/ml

**Source:**

Rabbit

**Isotype:**

IgG

**Immunogen Catalog Number:**

AG2567

**GenBank Accession Number:**

BC030702

**GeneID (NCBI):**

79648

**UNIPROT ID:**

Q8NEM0

**Full Name:**

microcephalin 1

**Calculated MW:**

93 kDa

**Observed MW:**

66 kDa, 100 kDa

**Purification Method:**

Antigen affinity purification

**Recommended Dilutions:**

WB 1:500-1:1000

IHC 1:20-1:200

## Applications

**Tested Applications:**

IHC, WB, ELISA

**Cited Applications:**

WB, IHC

**Species Specificity:**

human, mouse

**Cited Species:**

human

**Note-IHC: suggested antigen retrieval with TE buffer pH 9.0; (\*) Alternatively, antigen retrieval may be performed with citrate buffer pH 6.0**

**Positive Controls:**

**WB:** HeLa cells, L02 cells, MDA-MB-453s cells, mouse ovary tissue

**IHC:** human prostate cancer tissue, human kidney tissue

## Background Information

Primary microcephaly refers to the clinical finding of a head circumference less than 3 standard deviations (SD) below the age- and sex-related mean, present at birth. MCPH1, the first gene identified as causative for primary microcephaly, encodes a multifunctional protein that notably is linked to DNA damage checkpoint, DNA repair by homologous recombination and DNA transcription. MCPH1 is associated with premature chromosome condensation in particular. There are three mainly isoforms encoded by MCPH1 gene, full-length MCPH1 (MCPH1-FL) (~100kd), lacking the C-terminal BRCT isoform 2 (~70kd) and lacking middle region isoform 3 (~50kd). (PMID: 22952573)

## Notable Publications

Author	Pubmed ID	Journal	Application
Stephanie K Meyer	30303738	FASEB J	WB
Maria Arroyo	32144855	FEBS J	WB
Zerui Wang	33370873	Stem Cell Res	WB, IHC

## Storage

**Storage:**

Store at -20°C. Stable for one year after shipment.

**Storage Buffer:**

PBS with 0.02% sodium azide and 50% glycerol pH 7.3.

Aliquoting is unnecessary for -20°C storage

For technical support and original validation data for this product please contact:

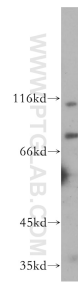
T: 4006900926

E: Proteintech-CN@ptglab.com

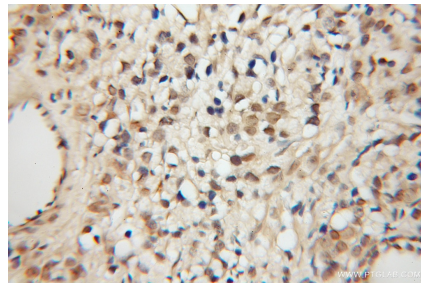
W: ptgcn.com

**This product is exclusively available under Proteintech Group brand and is not available to purchase from any other manufacturer.**

## Selected Validation Data



HeLa cells were subjected to SDS PAGE followed by western blot with 11962-1-AP (BRIT1 antibody) at dilution of 1:500 incubated at room temperature for 1.5 hours.



Immunohistochemical analysis of paraffin-embedded human prostate cancer using 11962-1-AP (BRIT1 antibody) at dilution of 1:50 (under 10x lens).