

For Research Use Only

# NPM3 Polyclonal antibody

Catalog Number: 11960-1-AP **1 Publications**



## Basic Information

<b>Catalog Number:</b> 11960-1-AP	<b>GenBank Accession Number:</b> BC054868	<b>Purification Method:</b> Antigen affinity purification
<b>Size:</b> 700 µg/ml	<b>GeneID (NCBI):</b> 10360	<b>Recommended Dilutions:</b> WB 1:1000-1:8000
<b>Source:</b> Rabbit	<b>UNIPROT ID:</b> O75607	IP 0.5-4.0 µg for 1.0-3.0 mg of total protein lysate
<b>Isotype:</b> IgG	<b>Full Name:</b> nucleophosmin/nucleoplasmin, 3	IHC 1:50-1:500
<b>Immunogen Catalog Number:</b> AG2564	<b>Calculated MW:</b> 178 aa, 19 kDa	IF 1:20-1:200
	<b>Observed MW:</b> 25 kDa	

## Applications

<b>Tested Applications:</b> IF/ICC, IHC, IP, WB, ELISA	<b>Positive Controls:</b> WB : HeLa cells, IP : HeLa cells, IHC : human lymphoma tissue, IF : HeLa cells,
<b>Cited Applications:</b> WB, IF, IHC	
<b>Species Specificity:</b> human, mouse, rat	
<b>Cited Species:</b> human	
<b>Note-IHC: suggested antigen retrieval with TE buffer pH 9.0; (*) Alternatively, antigen retrieval may be performed with citrate buffer pH 6.0</b>	

## Background Information

NPM3, a member of the nucleophosmin/ nucleoplasmin family, lacks intrinsic histone chaperone activity, inhibits histone assembly activity of NPM1 in vitro, and dramatically enhances transcription in a cellular system (PMID: 20073534). Human NPM3 is an abundant and widely expressed protein with primarily nuclear localization. The NPM3 protein migrated in SDS-PAGE gels as a doublet with apparent molecular masses of 25 and 27 kDa, which are larger than the 20.5 kDa mass predicted by the deduced amino acid sequence including the HA tag (PMID: 11722795). The NPM3 antibody can detect two bands with MW between 20-27 kDa.

## Notable Publications

Author	Pubmed ID	Journal	Application
Han Wang	38029539	Cancer Lett	WB,IHC,IF

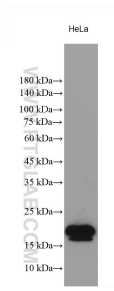
## Storage

**Storage:**  
Store at -20°C. Stable for one year after shipment.  
**Storage Buffer:**  
PBS with 0.02% sodium azide and 50% glycerol pH 7.3.  
Aliquoting is unnecessary for -20°C storage

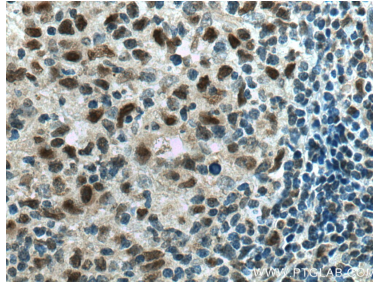
For technical support and original validation data for this product please contact:  
T: 4006900926 E: Proteintech-CN@ptglab.com W: ptgcn.com

This product is exclusively available under Proteintech Group brand and is not available to purchase from any other manufacturer.

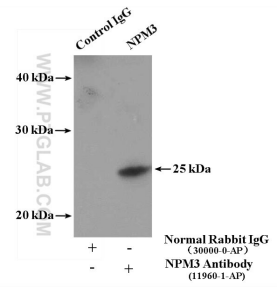
## Selected Validation Data



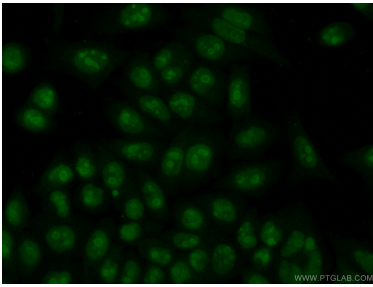
HeLa lysates were subjected to SDS PAGE followed by western blot with 11960-1-AP (NPM3 antibody) at dilution of 1:4000 incubated at room temperature for 1.5 hours.



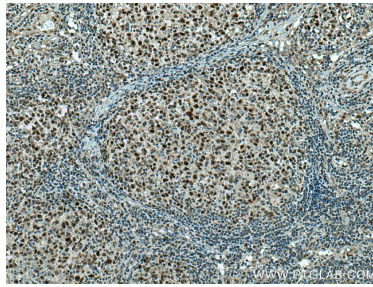
Immunohistochemical analysis of paraffin-embedded human lymphoma tissue slide using 11960-1-AP (NPM3 antibody) at dilution of 1:200 (under 40x lens). Heat mediated antigen retrieval with Tris-EDTA buffer (pH 9.0).



IP result of anti-NPM3 (IP:11960-1-AP, 4ug; Detection:11960-1-AP 1:500) with HeLa cells lysate 3400ug.



Immunofluorescent analysis of (10% Formaldehyde) fixed HeLa cells using 11960-1-AP (NPM3 antibody) at dilution of 1:50 and Alexa Fluor 488-conjugated AffiniPure Goat Anti-Rabbit IgG(H+L).



Immunohistochemical analysis of paraffin-embedded human lymphoma tissue slide using 11960-1-AP (NPM3 antibody) at dilution of 1:200 (under 10x lens). Heat mediated antigen retrieval with Tris-EDTA buffer (pH 9.0).