

For Research Use Only

RHCG Polyclonal antibody

Catalog Number: 11949-1-AP

Featured Product

2 Publications



Basic Information

Catalog Number:

11949-1-AP

Size:

450 ug/ml

Source:

Rabbit

Isotype:

IgG

Immunogen Catalog Number:

AG2493

GenBank Accession Number:

BC030965

GeneID (NCBI):

51458

UNIPROT ID:

Q9UBD6

Full Name:

Rh family, C glycoprotein

Calculated MW:

479 aa, 53 kDa

Observed MW:

52-55 kDa

Purification Method:

Antigen affinity purification

Recommended Dilutions:

WB 1:500-1:1000

IHC 1:50-1:500

Applications

Tested Applications:

WB, IHC, ELISA

Cited Applications:

WB, IHC, IF, ColP

Species Specificity:

human, mouse, rat

Cited Species:

human, mouse

Note-IHC: suggested antigen retrieval with TE buffer pH 9.0; (*) Alternatively, antigen retrieval may be performed with citrate buffer pH 6.0

Positive Controls:

WB : HEK-293 cells, human kidney tissue

IHC : human kidney tissue, human pancreas cancer tissue

Background Information

Notable Publications

Author	Pubmed ID	Journal	Application
Soline Bourgeois	29054531	Kidney Int	WB,IF,ColP
Wenguang Xu	31170090	Aging (Albany NY)	WB,IHC

Storage

Storage:

Store at -20°C. Stable for one year after shipment.

Storage Buffer:

PBS with 0.02% sodium azide and 50% glycerol pH 7.3.

Aliquoting is unnecessary for -20°C storage

For technical support and original validation data for this product please contact:

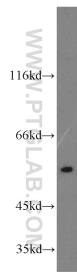
T: 4006900926

E: Proteintech-CN@ptglab.com

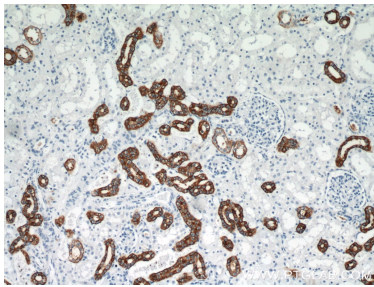
W: ptgcn.com

This product is exclusively available under Proteintech Group brand and is not available to purchase from any other manufacturer.

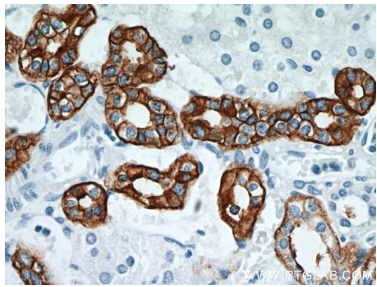
Selected Validation Data



HEK-293 cells were subjected to SDS PAGE followed by western blot with 11949-1-AP (RHCG antibody) at dilution of 1:300 incubated at room temperature for 1.5 hours.



Immunohistochemical analysis of paraffin-embedded human kidney using 11949-1-AP (RHCG antibody) at dilution of 1:200 (under 10x lens).



Immunohistochemical analysis of paraffin-embedded human kidney using 11949-1-AP (RHCG antibody) at dilution of 1:200 (under 40x lens).