

For Research Use Only

# ATF1 Polyclonal antibody, PBS Only

Catalog Number: 11946-1-PBS

Featured Product



## Basic Information

Catalog Number:

11946-1-PBS

Source:

Rabbit

Isotype:

IgG

Immunogen Catalog Number:

AG2548

GenBank Accession Number:

BC029619

GeneID (NCBI):

466

UNIPROT ID:

P18846

Full Name:

activating transcription factor 1

Calculated MW:

271 aa, 29 kDa

Observed MW:

35-40 kDa

Purification Method:

Antigen affinity purification

## Applications

Tested Applications:

WB, IF/ICC, IP, Indirect ELISA

Species Specificity:

human

## Background Information

TFs play a vital role in maintaining cell homeostasis by combining DNA regulatory sequences to regulate gene transcription rates. Activating transcription factor 1 (ATF1) is a member of the ATF/CREB family of transcription factors (TFs), specifically interacting with the consensus ATF/CRE site 'TGACGTCA' (PMID: 28032861). ATF1 transcriptionally regulates the expressions of target genes to mediate various cellular processes, and ATF1 effects the progression of tumors (including lung cancer, colorectal cancer, and nasopharyngeal carcinoma).

## Storage

Storage:

Store at -80°C.

**The product is shipped with ice packs. Upon receipt, store it immediately at -80°C**

Storage Buffer:

PBS only, pH7.3

For technical support and original validation data for this product please contact:

T: 4006900926

E: [Proteintech-CN@ptglab.com](mailto:Proteintech-CN@ptglab.com)

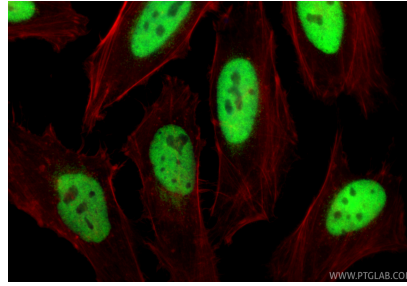
W: [ptgcn.com](http://ptgcn.com)

**This product is exclusively available under Proteintech Group brand and is not available to purchase from any other manufacturer.**

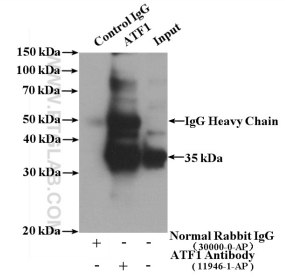
## Selected Validation Data



HeLa cells were subjected to SDS PAGE followed by western blot with 11946-1-AP (ATF1 antibody) at dilution of 1:500 incubated at room temperature for 1.5 hours. This data was developed using the same antibody clone with 11946-1-PBS in a different storage buffer formulation.



Immunofluorescent analysis of (4% PFA) fixed HeLa cells using ATF1 antibody (11946-1-AP) at dilution of 1:1000 and CoraLite®488-Conjugated Goat Anti-Rabbit IgG(H+L) (SA00013-2), CL594-Phalloidin (red). This data was developed using the same antibody clone with 11946-1-PBS in a different storage buffer formulation.



IP result of anti-ATF1 (IP:11946-1-AP, 4ug; Detection:11946-1-AP 1:500) with HeLa cells lysate 3200ug. This data was developed using the same antibody clone with 11946-1-PBS in a different storage buffer formulation.