

For Research Use Only

STEAP4 Polyclonal antibody

Catalog Number: 11944-1-AP

Featured Product

37 Publications



Basic Information

Catalog Number:

11944-1-AP

Concentration:

600 ug/ml

Source:

Rabbit

Isotype:

IgG

Immunogen Catalog Number:

AG2545

GenBank Accession Number:

BC020600

GeneID (NCBI):

79689

UNIPROT ID:

Q687X5

Full Name:

STEAP family member 4

Calculated MW:

52 kDa

Observed MW:

52 kDa

Purification Method:

Antigen affinity purification

Recommended Dilutions:

WB 1:500-1:1000

IP 0.5-4.0 ug for 1.0-3.0 mg of total protein lysate

IHC 1:50-1:500

IF-P 1:200-1:800

Applications

Tested Applications:

WB, IHC, IF-P, IP, ELISA

Cited Applications:

WB, IHC, IF

Species Specificity:

human, mouse, rat

Cited Species:

human, mouse, rat

Note-IHC: suggested antigen retrieval with TE buffer pH 9.0; (*) Alternatively, antigen retrieval may be performed with citrate buffer pH 6.0

Positive Controls:

WB: A549 cells, 3T3-L1 cells, rat liver tissue, human liver tissue, human brain tissue, RAW 264.7 cells

IP: 3T3-L1 cells,

IHC: human prostate cancer tissue,

IF-P: human placenta tissue,

Background Information

STEAP4 (also called STAMP2), is a member of the STEAP family. Structurally, It is a 459 amino acid protein characterized by a molecular topology of six transmembrane domains. The cytoplasmic N-terminal domain of STEAP4 shows structural similarity with bacterial and archaeal FNO oxidoreductase and STEAP4 exhibits a strong iron reductase activity. Studies in mice and human suggest that STEAP4 maybe involved in adipocyte development and metabolism, and may contribute to the normal biology of the prostate cell, as well as prostate cancer progression.

Notable Publications

Author	Pubmed ID	Journal	Application
Ji-Eun Park	33110955	Dev Reprod	WB,IHC
Ji-Eun Park	31660449	Dev Reprod	WB
Fang-Qiang Song	34583195	Biochem Biophys Res Commun	IHC

Storage

Storage:

Store at -20°C. Stable for one year after shipment.

Storage Buffer:

PBS with 0.02% sodium azide and 50% glycerol, pH7.3

Aliquoting is unnecessary for -20°C storage

For technical support and original validation data for this product please contact:

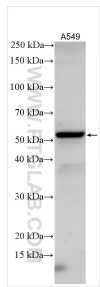
T: 4006900926

E: Proteintech-CN@ptglab.com

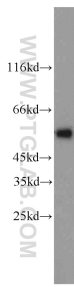
W: ptgcn.com

This product is exclusively available under Proteintech Group brand and is not available to purchase from any other manufacturer.

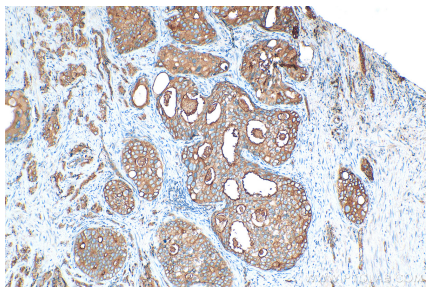
Selected Validation Data



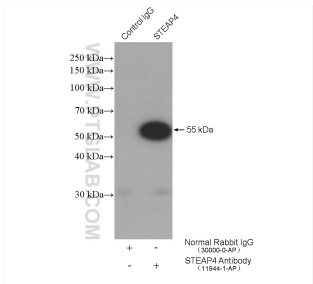
A549 cells were subjected to SDS PAGE followed by western blot with 11944-1-AP (STEAP4 antibody) at dilution of 1:500 incubated at room temperature for 1.5 hours.



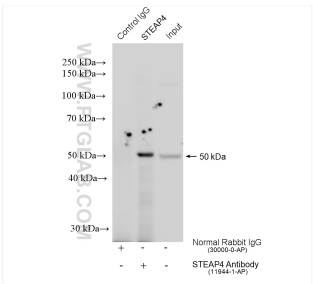
3T3-L1 cells were subjected to SDS PAGE followed by western blot with 11944-1-AP (STEAP4 antibody) at dilution of 1:1000 incubated at room temperature for 1.5 hours.



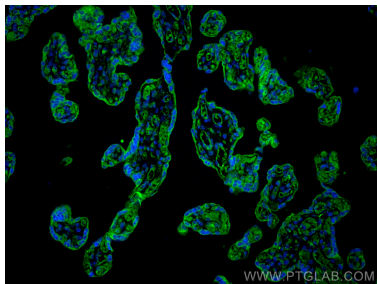
Immunohistochemical analysis of paraffin-embedded human prostate cancer tissue slide using 11944-1-AP (STEAP4 antibody) at dilution of 1:200 (under 10x lens). Heat mediated antigen retrieval with Tris-EDTA buffer (pH 9.0).



IP result of anti-STEAP4 (IP:11944-1-AP, 4ug; Detection:11944-1-AP 1:1000) with 3T3-L1 cells lysate 1200 ug.



IP result of anti-STEAP4 (IP:11944-1-AP, 4ug; Detection:11944-1-AP 1:500) with 3T3-L1 cells lysate 1360 ug.



Immunofluorescent analysis of (4% PFA) fixed paraffin-embedded human placenta tissue using STEAP4 antibody (11944-1-AP) at dilution of 1:400 and CoraLite®488-Conjugated Goat Anti-Rabbit IgG(H+L) (SA00013-2). Heat mediated antigen retrieval with Tris-EDTA buffer (pH 9.0).