

For Research Use Only

PSMA4 Polyclonal antibody

Catalog Number: 11943-2-AP **4 Publications**



Basic Information

Catalog Number:

11943-2-AP

Size:

850 µg/ml

Source:

Rabbit

Isotype:

IgG

Immunogen Catalog Number:

AG2542

GenBank Accession Number:

BC056249

GeneID (NCBI):

5685

UNIPROT ID:

P25789

Full Name:

proteasome (prosome, macropain) subunit, alpha type, 4

Calculated MW:

237 aa, 27 kDa

Observed MW:

29 kDa

Purification Method:

Antigen affinity purification

Recommended Dilutions:

WB 1:1000-1:4000

IP 0.5-4.0 µg for 1.0-3.0 mg of total protein lysate

IHC 1:50-1:500

IF 1:50-1:500

Applications

Tested Applications:

IF/ICC, IHC, IP, WB, ELISA

Cited Applications:

WB, IHC

Species Specificity:

human, mouse, rat

Cited Species:

human, mouse

Note-IHC: suggested antigen retrieval with TE buffer pH 9.0; (*) Alternatively, antigen retrieval may be performed with citrate buffer pH 6.0

Positive Controls:

WB: BxPC-3 cells, mouse kidney tissue, mouse spleen tissue, K-562 cells, U-937 cells

IP: BxPC-3 cells,

IHC: human pancreas cancer tissue, mouse liver tissue

IF: HeLa cells,

Background Information

Notable Publications

Author	Pubmed ID	Journal	Application
Monica Benvenuto	34561494	Sci Rep	IHC
Jayashree Chadchankar	31703099	PLoS One	WB
Hiroyuki Kondo	31915251	J Biol Chem	WB,IHC

Storage

Storage:

Store at -20°C. Stable for one year after shipment.

Storage Buffer:

PBS with 0.02% sodium azide and 50% glycerol pH 7.3.

Aliquoting is unnecessary for -20°C storage

For technical support and original validation data for this product please contact:

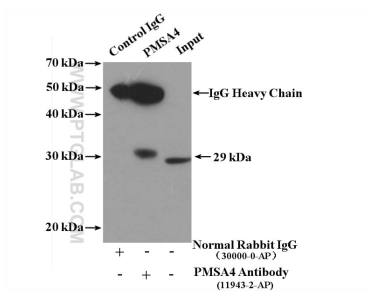
T: 4006900926

E: Proteintech-CN@ptglab.com

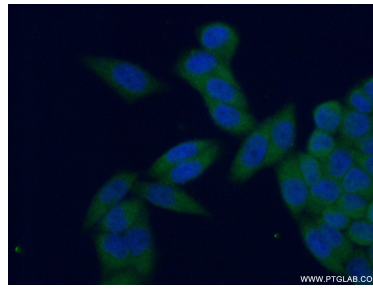
W: ptgcn.com

This product is exclusively available under Proteintech Group brand and is not available to purchase from any other manufacturer.

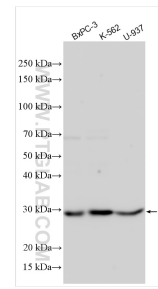
Selected Validation Data



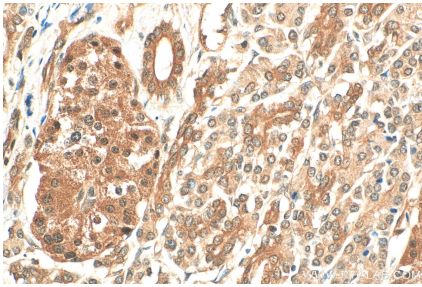
IP result of anti-PSMA4 (IP:11943-2-AP, 4ug; Detection:11943-2-AP 1:500) with BxPC-3 cells lysate 2800ug.



Immunofluorescent analysis of (4% PFA) fixed HeLa cells using 11943-2-AP (PSMA4 antibody) at dilution of 1:50 and Alexa Fluor 488-conjugated AffiniPure Goat Anti-Rabbit IgG(H+L).



Various lysates were subjected to SDS PAGE followed by western blot with 11943-2-AP (PSMA4 antibody) at dilution of 1:2000 incubated at room temperature for 1.5 hours.



Immunohistochemical analysis of paraffin-embedded human pancreas cancer tissue slide using 11943-2-AP (PSMA4 antibody) at dilution of 1:200 (under 40x lens). Heat mediated antigen retrieval with Tris-EDTA buffer (pH 9.0).